

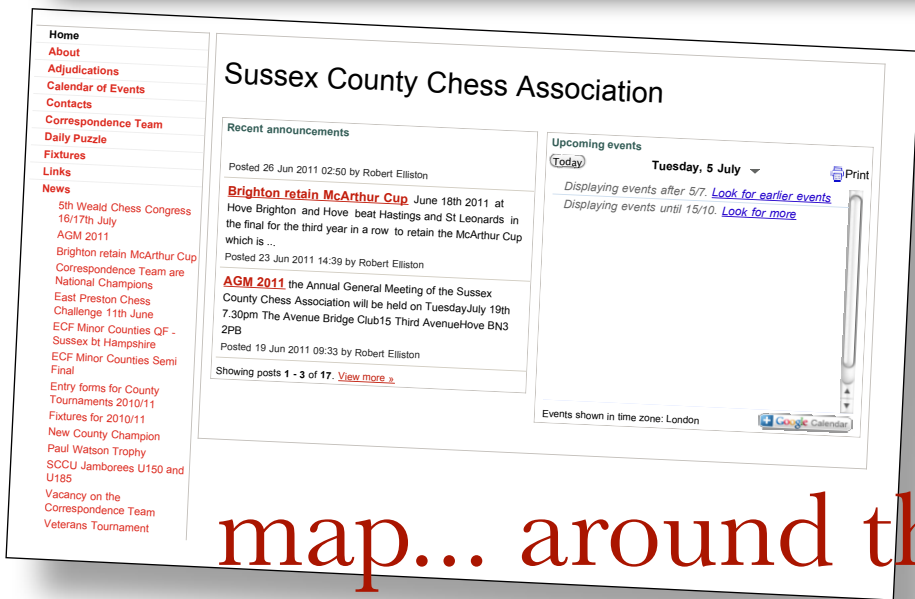
SUSSEX CHESS NEWS

2011



Youngsters lead the way - 4 page-special
The write stuff: Correspondence champs
Farewell to Sussex chess stalwart





Sussex chess is on the map... around the world!

VARIOUS options for a website were studied and most cost money.

Stuart Elliston, my son, who is knowledgeable about these things, suggested using Google sites as they were free and fairly easy to operate.

A simple layout was chosen as people will use the site for information and fancy graphics can be a distraction.

I put in the results, fixtures and announcements when received and from time to time Stuart tidies up my work.



ROBERT ELLISTON explains the background to Sussex Chess's web site <https://sites.google.com/site/sussexcca/>

Any input or comment is welcome
Send to robertvelliston@aol.com

Brighton breezy in cup triumph

Bernard Cafferty reports on this year's McArthur Cup final

PLAYED at 15 Third Avenue, Hove, in June, it was a closely-contested match which went the home side's way when, in a time scramble, the visitors blundered away a bishop in a winning position. This was Brighton's third win in a row.

Brighton & Hove CC v Hastings & St L CC
Luke Rutherford 1-0 Francis Rayner
Brian Denman 1-0 John Sugden
Geoffrey James ½ Richard Almond
Paul Batchelor ½ Chris Howell
Adrian Pickersgill ½ Bernard Cafferty
Nadezhda Somova 0-1 Robert Elliston
Brighton win 3½-2½

Welcome...

WELCOME to the 2011 edition of Sussex Chess News. My immense thanks to everyone who has submitted reports and pictures for inclusion.

Sussex County Chess Association is in a far

healthier position than a year ago, thanks to a number of people who have stepped forward to take on vital roles for the association.

We now have our own web site, providing chess

players with easy access to information; Horsham is national club of the year and our Minor Counties team did the county proud.

The future of chess in Sussex suddenly looks a lot rosier....



PAGE 26-27



Ringling the changes

PAGE 4-6

Golden oldies

PAGE 10-11



Egghead marks a cracking year

Farewell to Sussex stalwart



PAGE 36

I N D E X	Adjudications.....9	County results.....18-24	Junior Chess.....32-35
	Argumentatives.....28	Crowborough.....29	McArthur Cup.....2
	Bognor and Arun.....28	Eastbourne.....30	Mid-Sussex League.....12-14
	Brighton.....28	East Grinstead.....30	Obituary.....36-38
	Chichester.....29	ECF delegate.....6	Patrons.....50
	Clubs.....26-31	From the Archives.....10-11	SCCU.....4
	Competitions past year.....7	Games.....39-42	Who's Who.....51
	Competitions next year.....49	Grading.....8-9	Web site.....2
	Correspondence Chess.....25	Hastings & St Leonards.....30	Worthing.....31
	County teams.....15-17	Horsham.....26-27	



Answering the call...rules regarding mobile phones going off during matches are to be relaxed



I TOOK on the role of the county delegate to the SCCU following the 2010 AGM.

This has not proved to be too onerous a task in terms of number of meetings, there having been just three, including the SCCU annual meeting, during the whole year, but I feel that a certain amount of effort is required to do justice to researching, and consulting upon, items that appear on the agendas.

In order to try to represent the views of Sussex chess players faithfully, I set up an email consultation group that I circulate whenever significant agenda items arise, or to report on the outcome of meetings. If you receive these e-mails from me, you're in this group. If you don't, but would like to be included, just let me know.

The following is a brief summary of matters that have arisen over the past year

SCCU affiliated organisations

Berkshire Junior Chess Association and the London Chess Classic have been accepted as new non-county members of the union.

SCCU officers

David Howes of Surrey has taken over from Mike Gunn as SCCU president. I have taken on the role of grading secretary to add to my existing Sussex grading task.

Vacancy for junior organiser

The junior organiser (Dr Neill Cooper) stood down at the June, 2011, AGM and no-one else



JULIE DENNING
gives her Southern
Counties Chess Union
delegate's report

Ringling

has yet come forward to fill this post. This is of very real concern as there is now a risk of the SCCU no longer organising any junior events. A volunteer to take on this task is urgently sought. Perhaps someone from the active Sussex junior chess scene might be prepared to come forward?

Dates for county matches

For future seasons, the county match controller has agreed to try to avoid 4NCL weekends for all regional stage matches, rather than just for the Open and U180 teams as in the past.

ECF Counties Rapidplay Championship

The SCCU had organised this event for 2010, with the Essex County Association hosting it at

Wanstead House. Following a request from the ECF that we organise this event again in 2011, arrangements are going ahead for it to be held on September 24, with Wanstead House once again the probable venue. With the SCCU organising this event, there was some disappointment that a number of SCCU-affiliated counties, including Sussex, had not entered teams in 2010. It is requested that the SCCA attempts to support the forthcoming event this September.

Child protection

There was lengthy discussion at a couple of meetings over this issue. It had apparently been raised initially over concern about terms and conditions attached to an ECF-negotiated block insurance policy that appeared to imply that all aspects of the policy could be invalidated if child protection responsibilities were not fully and rigorously adhered to, even if a claim under the policy had absolutely no child protection considerations. This concern over the policy, which I understand a number of chess organisations have adopted, is still being

year, on top of cost cutting that has already been implemented, to make up for the loss of government funding. The currently favoured option within the ECF is to abandon the game fee system and move to a mandatory membership scheme for anyone wishing to have a published grade.

However, it is far from certain that this proposal will win the level of support it needs when it is finally voted upon. The alternative is likely to be a continuation of the current system of voluntary membership and mandatory game fees, albeit with game fees increased substantially (c. 30 per cent²) to make up the funding shortfall. The changes are due to take effect from the start of the 2012/13 season.

With any change to the current system, there are bound to be winners and losers. The main advantage of retaining game fees is that it better reflects the principle of the user pays, as the cost to an individual player would relate more directly to level of activity. Abandoning game fees in favour of mandatory ECF membership would get rid of a system that the ECF says is costly and complex to administer and, with no

the changes...

investigated. On the wider issue of child protection, I believe that all those most actively involved in junior chess in Sussex are well aware of, and in compliance with, their legal responsibilities. However, it is important for anyone thinking of arranging club sessions or other events aimed at junior players to be aware of these considerations.

ECF funding

This topic has been extensively debated elsewhere and has come up at SCCU meetings in order to decide how the union should use its ECF voting rights. Basically, if the ECF is to survive in anything like its present form, it needs to find additional funding of around £16,000 a

additional cost involved, might encourage more clubs to submit their internal results for grading, thus making the whole grading system more robust. The possible downside with the membership option is that it would represent a cost increase for the least active players, while the most active might save money.

I have not taken a strong view on which of the current ideas would be preferable. However, I do have rather stronger views on what I see as undue fears expressed in some quarters over the merits of one option over the other. The latest suggestion is that mandatory membership would involve an annual fee of £13 for an adult participating in graded chess competitions at club and league levels. If this did end up as the

final figure, simple calculations indicate that for a typical player reasonably active in graded club and league competitions, the difference between this fee and the alternative of increased game fees would border on the trivial.

British Championship qualifying places

It is within the gift of the union to grant the right to award of up to three qualifying places in the British Championships to events in our region. These rights have currently been granted (one each) to Essex and Thanet Congresses and to the London Chess Classic for 2011/12. (Hastings Congress was to have awarded one of these SCCU places, but has declined it.)

County match rules

A couple of changes have been made to these rules. Firstly, in the event of a tie-break being required to determine the ranking of teams in the regional stages, greater significance will, in future, be given to game points than to either board count or bottom board elimination. This

has been achieved by moving what was item (b) (6) above items (b)(4) and (b)(5) in Rule 12 which lists, in order of descending priority, the means of determining a tie-break.

The second change is a relaxation of the mobile phone rule. In future, a first offence will incur a warning. Loss of the game will be imposed only if there is a second occurrence by the same player in the same game. Rule 19 refers. This means that there will be a difference in this regard between the SCCU rules applying to the regional stages of county matches and the FIDE/ECF rules that will, presumably, still apply to the national stages. Clubs, leagues and congress organisers in Sussex might wish to consider whether they wish to follow the SCCU in this regard, or to stick with the “one strike and you’re out” standard.

Both these rule changes have already been implemented on the SCCU website. I am happy to retain this role for the county association should that be the wish of the membership at the 2011 AGM.

Membership scheme ‘doomed to fail’

AS you will know, the government grant has been withdrawn and as such we have a considerable financial problem.

The game fee has been raised to 58p, but there are proposals for big changes in the future to be worked out in detail for the 2012/13 season.

The proposal is to go to a universal membership-only system, with no game fee. Only members’ games will be graded. This was passed 91-71.

I think this system is going to fail both to increase membership and raise enough money to keep the federation going, unless some method is found to incorporate only a few games.

Who is going to ask a reserve called into a team at last minute for a ECF membership fee to play? It will be all right for the big clubs and large congresses, but not for our small clubs. It goes



Ray Williams gives his Sussex County ECF and BCF council delegate report

back to the system the game fee replaced which failed.

I have been Sussex delegate since the 1970s and have enjoyed doing it. But as I have indicated in the last two years my health will no longer allow me to travel or give the job the attention it needs, particularly in these difficult times, so I am resigning this year.

Mid Sussex League also has a delegate and votes, but there are clubs who are not members of that league and we need to get a full representation.

Sussex players are feeling champion!



County Championship

Nine entries, Knockout. All games played.

Champion: Luke Rutherford

Veterans Championship

(age 60+)

Four entries, all-play-all. Three players completed programme.

Title shared by Bob Elliston and Geoffrey James.

East Sussex Queen

(grade <180)

Five entries, all-play-all. Two players completed programme.

Title won by Adrian Pickersgill.

West Sussex Queen

(grade <180)

No entries

Victory... Adrian Pickersgill won the East Sussex Queen, but there were no entries for the West Sussex Queen competition

McArthur Cup (teams)

Three entries, Knockout Cup won by Brighton & Hove.

Paul Watson Trophy (teams: grade <175)

Two entries, Knockout

Trophy won by Lewes

My thanks to all who took part

**Tournament controller
Paul Buswell**

Counting the cost of making the grade



There's big changes afoot regarding the issuing of players' grades...and how they're going to be paid for. Grading officer JULIE DENNING explains all

AS I write this, the summer 2011 grading lists are awaited. There's very little to say with regard to the 2010/11 season that has gone smoothly from my point of view.

A number of Sussex clubs submit results from their internal competitions for grading. However, a number of others do not. If any other clubs want to start doing this for future seasons, please just get in touch with me and it is easily arranged.

There are a couple of matters, however, that are going to

impact on grading in coming seasons.

Firstly, the standard play grading list is going to follow the pattern already established by the rapid play list and be up-dated twice a year from now on. The cut-off date for the mid-season update will be December 31, with results to be submitted by the end of January.

Submitting results at that stage will be voluntary and any early season results not submitted then can still be submitted for the following summer update. I intend submitting early season Mid Sussex League results in January.

I leave it up to clubs that submit results through me to decide what to do. If they care to give me results up till the end of December, I will process and send them in.

Otherwise, they can continue to be submitted in one batch in June.

Where competitions have grading criteria for player eligibility, it will be for the relevant club or organiser to determine whether to take account of the mid-season update when it becomes available, or to decide that the summer grades will be used throughout the following season.



The second point that needs keeping an eye on is the on-going saga of ECF funding. I will not try to discuss this in detail here as it has been extensively aired elsewhere.

However, in case there's still anyone who hasn't heard about it, a problem has arisen in balancing the books at the ECF due to a government grant that they have been receiving in recent years being withdrawn as part of the overall spending restraints.

The possibilities for making up the shortfall have implications for game fees and, hence, on the grading system.

The current front-runner within the ECF is to move to a "universal membership scheme", whereby anyone wishing to receive a published grade would be required to become a Member of the ECF, at an annual fee for an adult currently speculated to be set at £13 for those only playing club or league chess. (Higher levels of membership, at increased fees, might apply for those entering congresses and/or FIDE-rated events.)

Under this option, game fees would be scrapped completely.

Adopting this change requires amendments to ECF rules that would have to be approved by at least 75 per cent of voters at a forthcoming council meeting.

The omens for this being achieved aren't looking too good. (For example, the Mid-Sussex

League has decided to use its two votes against moving to such a scheme.)

If the universal membership scheme is not adopted, it is likely that the current system of game fees and voluntary ECF membership will continue, but with game fees increased by, perhaps, around 30 per cent from their 2010/11 levels.

Success of a mandatory membership scheme would depend upon setting the fee at a level that persuaded sufficient players to take it up.

Some fear that this would not be achieved and that a substantial proportion of currently graded players would simply opt out of grading.

However, for a typically active player competing in graded league and club competitions, the difference in cost between the two options would be quite small.

With the abolition of the pay-per-game game fee system, more clubs might be persuaded to submit internal results for grading, making the grading system more robust for everyone.

Anyone interested in keeping up to date on these developments should keep an eye on various websites, such as the SCCU (www.sccu.ndo.co.uk), the ECF (www.englishchess.org.uk) or the English Chess Forum (www.ecforum.org.uk).

The changes are intended to come into effect for the 2012/13. For the coming (2011/12) season, the current system will continue, albeit with some increases in game fees.

Under this option, game fees would be scrapped completely

Players' appealing positions

Robert Elliston gives his adjudications secretary's report

Our panel is Geoffrey James, Mike Nicholas, Bernard Cafferty, Gareth Anthony, Luke Rutherford, Peter Kemp, Dix Roberts, Trevor Norton, Feliks Kwiatowski and myself.

This season, we had 11 positions to consider. There were three appeals, two of which were successful. Thank you to the adjudication panel for their work.

History in the making



At last year's annual meeting, BRIAN DENMAN was elected county archivist. He reflects on the background to a picture of Sussex players taken 125 years ago...

I AM very grateful to the well-known historian and writer, Tim Harding, for sending me the photograph of Sussex chess players taken 125 years ago.

Tim was carrying out research at the national archives section at Kew, when he came across the photograph opposite.

Unfortunately, it was sealed in plastic and Tim was not allowed to remove this, which made it very difficult for him to obtain a good picture.

The names of the players are not given, and, although we have photographs elsewhere of a few of the players at different stages in their life, it is very difficult to be certain of the identity of those in the group.

The picture was taken on May 8, 1886, on the occasion of a Sussex v Surrey friendly match held at the lavish venue of the Royal Pavilion in Brighton.

According to the Sussex chess archives, there were 20 players in each side.

Few, if any, of the games would have been played with a clock and, if a game came to an end before the end of the session, another game could be played, which, if completed, was added to the match score. Sussex were the overall winners by 18.5 to 9.5.

The Sussex Chess Association possesses a fine collection of archive material going back to 1879.

Towards the end of last year, Chris Ravilious, who was looking after the archives, made arrangements for them to be transferred to the National Chess Library at Hastings.

The ECF collected the material and took it to Battle.

Unfortunately, the chess library does not have any space for the archives at the moment, but the construction of a new library building in the same area of Hastings should eventually free up some more space for historical chess material.

It seems unlikely, however, that the transfer of the Sussex chess archives to Hastings will be made before January, 2012, at the earliest.



Chess...1886-style. These dapper looking gentlemen were taking part in a Sussex v Surrey friendly match.

What's in a name?

McArthur...or McArthur's Cup? Sussex Chess Association...or SCCA? Brian Denman considers the titles of our association and clubs' competition

I WOULD like to mention a couple of topics raised by Paul Buswell recently:

1. Has the Sussex Chess Association a constitution and what is its correct title?

The organisation was founded in 1882 as the Sussex Chess Association and even as late as the 1960s, it had its own constitution.

However, in more recent times, the title of Sussex County Chess Association has been applied, perhaps because other counties have used the C.C.A. initials.

The constitution clearly needs updating, but strictly speaking, the correct title for the organisation is the Sussex Chess Association.

2. Do we call the Sussex clubs' competition the McArthur Cup or McArthur's Cup?

Sgt Major William McArthur, a former secretary of the Sussex Chess Association and a member of the Chichester CC, was no longer alive when the competition started.

He had promoted the idea of inter-club matches and not long after his death in 1888 the McArthur Cup, which was named in his honour, came into being.

The trophy itself bears the title of McArthur's Cup, but even in Victorian times people called it the McArthur Cup.

Over the years, the number of times that it has been called McArthur's Cup is very small. My own view is that we should call it the McArthur Cup.

THIS was another closely competitive year in the Mid Sussex League, with all divisions being tightly contested and some outstanding results.

This season, 32 teams competed in the Mid Sussex League, which was six teams fewer than the previous season and resulted in three, rather than four divisions. There was an extra game for each team and some highly competitive chess!

In Division 1, Hastings & St Leonards 1 beat a fiercely competitive field with an impressive 8/10. Brighton 1 were runners-up on this occasion, continuing their consistently impressive form, having been in the top four in every year since 2003.

Given this record, it is therefore a little surprising that they have only won once in that period - in 2004. Perhaps next year will be their year again.

Interestingly, both Horsham 2 and Hastings & St Leonards 2 managed to maintain their places in division 1 for next season. Lewes 1 were runners-up last year but had suffered a change of fortunes and find themselves, along with Brighton & Hove 2, being relegated this year.

In division 2, St Francis & Haywards Heath 1 absolutely forged ahead, scoring a perfect 10/10 and securing promotion with Uckfield 1 to division 1 next year. Given that Uckfield only joined the MSL in 2006, their promotion to the top division is even more remarkable.

Hastings' Mid Sussex mastery



Mid Sussex secretary IAN COMLEY reports on a highly successful season

The only two fourth teams in this division, Horsham 4 and Brighton 4, both found themselves at the bottom of the division and facing relegation to division 3 next year.

Division 3 was once again dominated by St Francis & Haywards Heath, where their second team missed out by a whisker on

replicating their first team perfect score with an equally authoritative 8.5/9.

East Grinstead 1 will also join them in promotion to division 2 next year. At the bottom of the division, Brighton 6, East Grinstead 2 and Uckfield 2 all gained 1.5 points and all had managed a win each.

In the Knockout competition, both Horsham and Crowborough fielded two teams. In the semi-finals, Horsham 1 beat Lewes 1 before going on to beat St Francis and Haywards Heath 1 in the final.

In a final, with two very closely-matched teams,

Horsham out graded St Francis & Haywards Heath by only three points, with the Horsham team totalling 1,000 points and St Francis & Haywards Heath totalling 997. Horsham scored 4½ points and retained the title.

There was an extra game for each team and some highly competitive chess!

MID SUSSEX LEAGUE

There were some truly impressive individual scores, with Mike Nicholas, Knoll Knights and Feliks Kwiatkowski, St Francis & Haywards Heath 1 in division 1 and 2 respectively both scoring 9/10 (90%) but they

were eclipsed by the performance of Ian Dennis, East Grinstead 1, in division 3 with 7.5/8 (93.75%).

On the administrative side there was a significant change with Sue Chadwick stepping

down as league secretary following many successful years' service.

She has no respite, however, as she continues to support the world of chess as the president of Brighton & Hove chess club.

TABLES

Division 1																
		1	2	3	4	5	6	7	8	9	10	11	No.	MP	GP	DP
1	Hastings&St Leonards 1		3	3	3	2	3	2½	2½	4½	4	4	10	8	31½	
2	Brighton & Hove 1	2		1	4	2½	2½	3½	3½	4½	4	4½	10	7	32	
3	Horsham 1	2	4		3	2	2	3½	4	3	4	3½	10	7	31	
4	Knoll Knights	2	1	2		4	2½	4	3	4½	4	3½	10	6½	30½	
5	Crowborough 1	3	2½	3	1		4½	1½†	3½	3	3	4½	10	6½†	29½	1
6	Worthing 1	2	2½	3	2½	½		4	2	2½	3	3½	10	5½	25½	
7	Eastbourne 1	2½	1½	1½	1	3½	1		4½	3	2½	2	10	4	23	
8	Horsham 2	2½	1½	1	2	1½	3	½		2½	3	3½	10	4	21	
9	Hastings&St Leonards 2	½	½	2	½	2	2½	2	2½		3	2½	10	2½	18	
10	Lewes 1	1	1	1	1	2	2	2½	2	2		4	10	1½	18½	
11	Brighton & Hove 2	1	½	1½	1½	½	1½	3	1½†	2½	1		10	½†	14½	1

† 1MP penalty applied under Rule 6.2 for defaulted match

Division 2																
		1	2	3	4	5	6	7	8	9	10	11	No.	MP	GP	DP
1	St Francis&Hay Heath 1		4	3	4	4½	4½	3½	4½	3½	5	3½	10	10	40	
2	Uckfield 1	1		1	3½	3½	4	5	2½	3½	5	1	10	6½	30	
3	Woodpushers 1	2	4		2½	3	1½	2	3½	3½	3	4	10	6½	29	1
4	Horsham 3	1	1½	2½		2½	4	2	4	3½	3½	4	10	6	28½	
5	The Argumentatives	½	1½	2	2½		2	3	3	3	3	4	10	5½	24½	2
6	Lewes 2	½	1	3½	1	3		2½	3	2	3	4	10	5½	23½	
7	Worthing 2	1½	0	3	3	2	2½		2½	2	2½	5	10	4½	24	
8	Eastbourne 2	½	2½	1½	1	2	2	2½		3½	4½	3	10	4	23	
9	Brighton & Hove 3	1½	1½	1½	1½	2	3	3	1½		2½	5	10	3½	23	
10	Horsham 4	0	0	2	1½	2	2	2½	½	2½		2½	10	1½	15½	5
11	Brighton & Hove 4	1½	4	1	1	1	1	0	2†	0	2½		10	½†	14	1

Key: MP = Match Points GP = Game Points DP = Default Points

MID SUSSEX LEAGUE

Division 3

		1	2	3	4	5	6=	6=	8=	8=	8=	No.	MP	GP	DP
1	St Francis&Hay Heath 2		3½	3	3½	3	4	2½	3	3½	3½	9	8½	29½	1
2	East Grinstead 1	1½		3½	3½	2½	2½	3	5	4½	4	9	7	30	
3	Woodpushers 2	2	1½		3½	1½	2½	4	5	4	3	9	5½	27	1
4	Brighton & Hove 5	1½	1½	1½		3½	3½	2½	3	3	4½	9	5½	24½	
5	Eastbourne 3	2	2½	3½	1½		1½	2½	4	4	3½	9	5	25	1
6=	Crowborough 2	1	2½	2½	1½	3½		2	2½	3½	3	9	4½	22	3
6=	Horsham 5	2½	2	1	2½	2½	3		1½	3	4	9	4½	22	
8=	Brighton & Hove 6	2	0	0	2	1	2½	3½		2	2	9	1½	15	
8=	East Grinstead 2	1½	½	1	2	1	1½	2	3		2½	9	1½	15	1
8=	Uckfield 2	1½	1	2	½	1½	2	1	3	2½		9	1½	15	

Top Individual results

	Name	Club / Team	Score	%
Overall (≥ 7 Games)	IAN DENNIS	East Grinstead 1	7½ / 8	93.75
	M Kevin Beglin	Woodpushers 1 & 2	6½ / 7	92.85
	Feliks Kwiatkowski	St Francis & Haywards Heath 1	9 / 10	90
	Michael Nicholas	Knoll Knights	9 / 10	90
	David Curtis	St Francis & Haywards Heath 1 & 2	8 / 9	88.89
	Robert Fitzgerald	St Francis & Haywards Heath 1	7 / 8	87.5
	Thomas Fitzgerald	St Francis & Haywards Heath 1 & 2	7 / 8	87.5
	David Fryer	Uckfield 1	8½ / 10	85
	Julian Mitchell	Woodpushers 1	7½ / 9	83.33
	Vincent Ellis	Eastbourne 1, 2 & 3	6½ / 8	81.25
	Carl Blinco	St Francis & Haywards Heath 1 & 2	7 / 9	77.78
	Gerald Michaud	Division	7 / 9	77.78
	Julian Clark	Woodpushers 1 & 2	8½ / 11	77.27
	Paul Batchelor	Brighton & Hove 1	7½ / 10	75
	Morgan Blake	Worthing 1 & 2	6 / 8	75
	Ian Comley	Horsham 2 & 3	7½ / 10	75
Jim Graham	Argumentatives	7½ / 10	75	
Owen Joyce-Coughlan	Brighton & Hove 4, 5 & 6	9 / 12	75	
One (≥ 8 Games)	MICHAEL NICHOLAS	Knoll Knights	9 / 10	90
	Paul Batchelor	Brighton & Hove 1	7½ / 10	75
Two (≥ 8 Games)	FELIKS KWIATKOWSKI	St Francis & Haywards Heath 1	9 / 10	90
	Robert Fitzgerald	St Francis & Haywards Heath 1	7 / 8	87.5
	David Fryer	Uckfield	8½ / 10	85
	Ian Comley	Horsham 3	7½ / 9	83.33
	Julian Mitchell	Woodpushers 1	7½ / 9	83.33
	Gerald Michaud	Uckfield 1	7 / 9	77.78
	Jim Graham	Argumentatives	7½ / 10	75
Three (≥ 7 Games)	IAN DENNIS	East Grinstead 1	7½ / 8	93.75
	David Curtis	St Francis & Haywards Heath 2	7 / 8	87.5
	Julian Clark	Woodpushers 2	6½ / 8	81.25
	Owen Joyce-Coughlan	Brighton & Hove 5 & 6	7 / 9	77.78

Open & Minor Counties

HAVING won the SCCU Championship and reached the ECF Stage Final in 2010, this season was a disappointment as regards results.

In the SCCU stage, we lost four matches and only avoided a whitewash by drawing with Hertfordshire in the final fixture. This meant that we finished bottom of the table.

Unfortunately, a variety of other commitments meant that there were a significant number of strong players missing in all bar one of the matches, and, therefore, the teams were considerably weaker than last season.

Also, our players weren't in such sparkling form as last season.

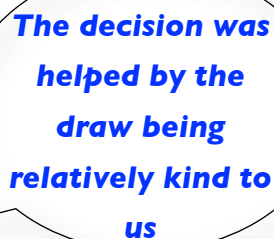
None of this should detract at all from the efforts of all those that played this season, as we performed above grading expectations in nearly all the matches.

The defeats against Essex and Middlesex were only by one game point and so these matches could easily have been in our favour or drawn, which would have made things much rosier.

We were offered a place in the Minor Counties unexpectedly, when Essex decided to focus on the Under 180 competition, because they felt they could not raise a team for this as well. Especially as in the Minor Counties, the average grade of the team fielded in each match must be lower than 180.

It was a finely balanced judgment as to whether there was sufficient interest to raise a team, but as the Sussex Association is about playing chess rather than not playing it, it was decided to go ahead.

This decision was helped by the draw being relatively kind to us.



The decision was helped by the draw being relatively kind to us

In the quarter-final, we had the ideal away fixture against Hampshire, and they arranged a venue not far over the border near Havant.

Our team was close to the maximum average grade and so had a slight advantage on grading over our opponents.

We won 10-6 and decisive was four consecutive wins on board 8-11. Regrettably, our only win of the season in the Open and Minor Counties.

In the semi-final, we lost to eventual champions Bedfordshire 7-9. Again, it proved difficult to raise a team and very regrettably defaulted on board 16.

Again, a variety of other commitments meant that players were not available rather than the fairly lengthy journey to Milton Keynes putting people off.

Our opponents had an almost maximum strength team, with four players graded 206+, including an IM.

However, we achieved a score of 6-4 on the top 10 boards, despite being out-graded on every one.

Unfortunately, their greater strength at the bottom proved decisive as we won only one and lost five (including the default).

Thank you to everyone who played in the team this season. In particular, those who helped with setting up and clearing away at home matches.

New players are always welcome, so please get in touch if you are 170+ and would like to play, or if you know of anyone at your club or elsewhere who is eligible for Sussex.

Richard Almond and Paul Selby
 ➡ **Results - P18-24**

Under 180

IN my second season as Under180 team captain, our first fixture was away to Middlesex. The venue was the Exmouth Arms.

This match we lost unfortunately by 9.5-6.5. Winners were Tim Spanton, Paul Taylor and Mel Young. At least this time the venue was available for play. The previous season we had won by default.

Our next match was versus Surrey at home. Surrey had proved strong in the past and this was still to prove the case. The team lost 7-9. Wins were recorded by Rasa Norinkeviciute and Mick Reddie.

The third match of the season was away to Essex. Essex had been very difficult to beat at their home venue in the past. This still proved something of an obstacle as they triumphed 11-5. No Sussex player recorded a win in this fixture.

The fourth match of the SCCU 2010-11 season was to be against Kent. I was hoping for a reversal in fortunes. Indeed this did occur as Sussex surged to victory with a 9.5-6.5 win. In

this match, Sussex were to record eight wins. Winners were Jaimie Wilson, Tim Spanton, David Roberts, Adrian Pickersgill, Anthony Higgs, Paul Taylor, Mick Reddie and Paul Batchelor.

Twenty-Six players played some part in the Under 180 campaign. Nine scored greater than 50 per cent. Jamie Wilson 2/3, myself 2.5/4, Rasa Norinkeviciute 1.5/2, Tim Spanton 2.5/3, David Roberts 2.5/4, Paul Taylor 2/3, Mel Young 1.5/2, Anthony Higgs 2/3 and Mick Reddie 2.5/3.

Three players played in all four fixtures. These were David Roberts, Adrian Pickersgill and Paul Batchelor. During the season, we had scored 1 match point and 28 game points. I am glad we finished on a winning note and something of a high.

Thanks go to John Cannon for assisting in the 'setting up' and for managing to get an alternative venue at short notice when Hassocks suddenly became unavailable.

Paul Batchelor

Under 160

THE omens were not good when, at the start of the season and despite a wide trawl, there were fewer available players between 140 and 159 than in the previous season.

It was not possible to field a single Sussex team from 140 upwards, and under-140 players were used 18 times, partly due to fixture clashes with the 4NCL, which won't happen in future.

Conversely, the other five counties had teams from 140 upwards on 10 occasions and used under-140 players only 14 times between them.

A Sussex record of played 5 lost 5 was therefore not too surprising, although there were

two 7½ - 8½ losses, when lady luck let Sussex down in the last games to finish.

Seven players were ever-present: Paul Kington; myself; Mick Reddie; Jerry Stone; John Marshall; Mark Baldoc and David Wallis, and just three players scored above 50 percent, namely Bob Fisher 3/4 plus a default win; Tom Fitzgerald 3/4 and Julie Denning 2/3.

There were no Sussex defaults and I am grateful to all 26 players who turned out. Hopefully, the vagaries of the grading system will see the team being more competitive next season.

John Cannon

Under 140

FOR this season I was the new captain, taking over from Gary McCulloch. I am a relative newcomer to Sussex, having moved here just two years ago, from Norfolk.

However, being captain of a county team is not new to me – I was the Norfolk U-125 captain for a number of years, and prior to that U-125 captain of another county. So being a county captain is quite familiar to me!

The start of the season was very difficult for me as shortly after I became captain, I started on a major piece of consultancy in Hampshire.

I am a computer security consultant by profession, and this piece of work, which continued until December, meant a combination of long days as well as quite a few nights away. So I had very little spare time in which to organise the matches planned for October, November and December.

I am very grateful to both Gary McCulloch, who passed over to me his Sussex contacts, and especially to John Cannon of Horsham, the current U-160 captain, who was very helpful to me in the early days of my captaincy.

There are a couple of observations which are pertinent to my building the team – firstly, is that, inevitably I suppose, quite a lot of the contact information was unusable, and secondly how many Sussex players did not want to play for a county team. Both of these meant I was wasting quite a lot of time – time that I did not have!

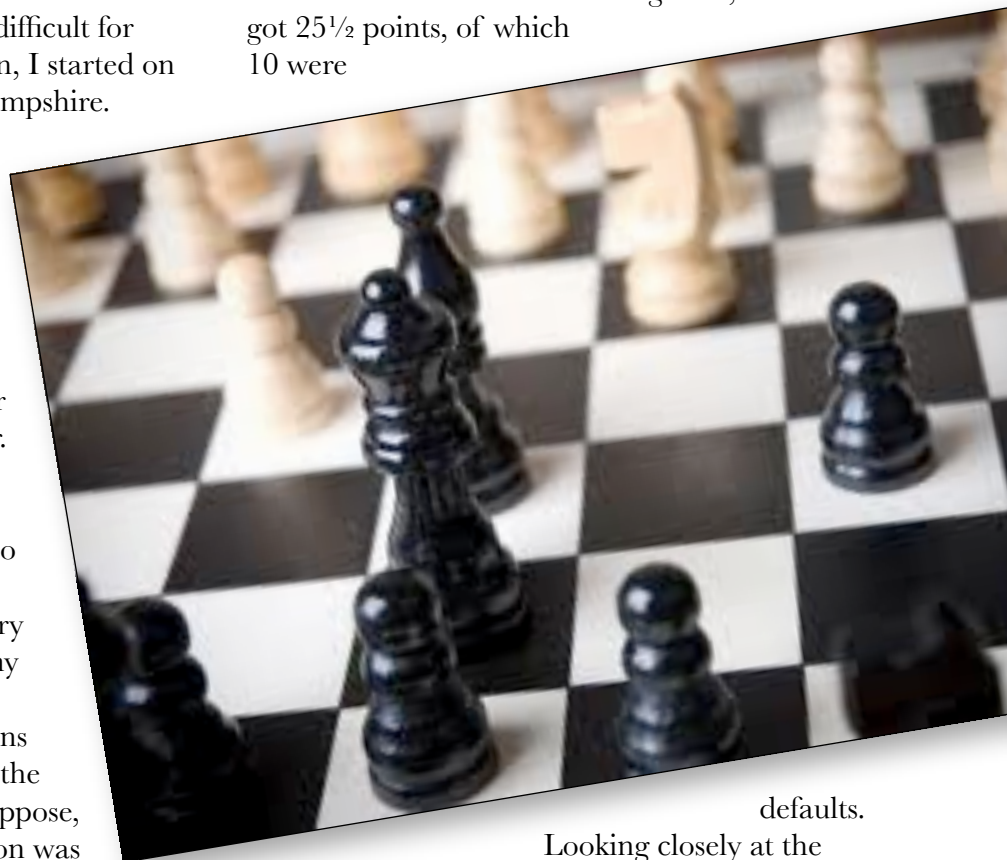
This season, Sussex had one match against each of Essex, Middlesex, Hertfordshire Kent and Surrey. We started the season with a home match against Essex, for which I was able to get a full team of 16 out.

Alas, we lost the match but, as my debut as captain, I was pleased to get a full team out. I found it particularly hard to

do get a team out for our third match, away against Hertfordshire, just two weeks before Christmas.

By the date of the match I was short of a full team, but, in consultation with the Hertfordshire captain, we decided to proceed with the match, even though we had to default several boards.

So, how did we do in our five matches? Alas, we lost them all. Out of the 80 games, we got 25½ points, of which 10 were



defaults. Looking closely at the results, we are fine in the top half of our team, where our grades are the same as our opponents, and our results are good.

It is in the lower part of the team where we have been outgraded, and have been less successful. In particular, against Kent, where we were not only outgraded on every board except one, but substantially outgraded!

Thanks to all the players who turned up to play, especially those who played in all five matches.

Keith Osborne

It is in the lower part of the team where we have been outgraded

COUNTY RESULTS

OPEN

23.10.10	Sussex		Kent	
1	Luke Rutherford 212 (B)	0	1	Neil McDonald 233
2	George Salimbeni 205	1/2	1/2	Martin Taylor 211
3	Brian Denman 200	1/2	1/2	Tony Stebbings 205
4	Richard Almond 192	1/2	1/2	Ian Snape 204
5	Peter Kemp 189	0	1	Paul Talsma 204
6	Mark Broom 186	1/2	1/2	Ian Watson 201
7	Geoffrey James 179	0	1	Victor Jones 200
8	Brian Donnelly 179	0	1	Alan Hanreck 200
9	Jaimie Wilson 176	1/2	1/2	William Jones 196
10	Paul Batchelor 175	0	1	Ben Spink 191
11	Jeffrey Boardman 171	0	1	John Sugden 190
12	Felix Haxby 171	1/2	1/2	Stephen W Giddins
13	Anthony Higgs 168	1/2	1/2	J Stuart Williams 185
14	Nadezda Somova 165	1/2	1/2	David Tucker 184
15	Paul Taylor 162	0	1	Laurence Ball 182
16	Matthew Payne 159	1/2	1/2	Conor Murphy 168
<i>Haywards Heath</i>		4 1/2	11 1/2	

20.11.10	Essex		Sussex	
1	Richard Pert 224 (B)	1/2	1/2	Luke Rutherford 212
2	Jonathan Rogers 209	0	1	Feliks Kwiatkowski 206
3	David Sands 211	1/2	1/2	David Grant 198
4	David Coleman 201	1/2	1/2	Peter Farr 201
5	John Hodgson 195	1/2	1/2	Brian Denman 200
6	Jeff Goldberg 191	1/2	1/2	Richard Almond 192
7	Tim Hebbes 189	1/2	1/2	Jaimie Wilson 176
8	Ivor Smith (r) 182	0	1	Rolandas Lukosius 176
9	Larry Marden 185	1	0	Paul Batchelor 175
10	Chris Fegan 178	1	0	Jeffery Boardman 171
11	Ian Reynolds 178	0	1	Adrian Pickersgill 170
12	John Moore 177	1	0	Anthony Higgs 168
13	Philip Gregory 176	1/2	1/2	Nadezda Somova 165
14	David Spearman 176	1	0	Paul Taylor 162
15	Robert Parker 175	1/2	1/2	L John Cannon 156
16	David Millward 171	1/2	1/2	Timothy Woods 149
<i>Wanstead</i>		8 1/2	7 1/2	

8.1.11	Sussex		Surrey	
1	Feliks Kwiatkowski 206	1/2	1/2	Russell Granat 214 (B)
2	Donald Macfarlane 205	0	1	Marcus Osborne 204
3	Brian Denman 200	1/2	1/2	Ian Sharpe 198
4	Peter Farr 201	0	1	Gordon Meyer 197
5	Gareth Anthony 196	1/2	1/2	Daniel Hunt 191
6	Richard Almond 192	1/2	1/2	David Rowson 189
7	Peter Kemp 189	1	0	Peter Lalic 185
8	Kenneth Norman 187	1/2	1/2	Keith Richardson 184
9	Mark Broom 186	1/2	1/2	Dan Rosen 185
10	Martin Costley 185	1/2	1/2	Graham Keane 180
11	Robert Elliston 181	0	1	Julian Way 184
12	Geoffrey James 179	1/2	1/2	Alan Punnett 181
13	Brian Donnelly 179	1	0	Phil Stimpson 178
14	Jamie Wilson 176	1/2	1/2	Richard Edwards 177
15	Paul Batchelor 175	0	1	Dan Staples 172
16	Tim Spanton 172	0	1	Owen Phillips 163
<i>Hassocks</i>		6 1/2	9 1/2	

COUNTY RESULTS

OPEN

5.2.11	Middlesex		Sussex
1	Richard Bates 219 (B)	0 1	Luke Rutherford 212
2	Richard McMichael 208	0 1	Feliks Kwiatkowski 206
3	Robert Eames 207	½ ½	Brian Denman 200
4	Mark Rich 203	1 0	Peter Farr 201
5	Andrew Stone 199	½ ½	Richard Almond 192
6	Daniel Farkas 194	½ ½	Mark Broom 186
7	Jochen Wittmann 194	1 0	Geoffrey James 179
8	Carsten Pedersen 191	½ ½	Rasa Norinkeviciute 175
9	Rik Thomas 189	1 0	Paul Batchelor 175
10	Colin Mackenzie 187	0 1	David Roberts 172
11	Philip Makepeace 185	½ ½	Tim Spanton 172
12	John Reid 180	1 0	Adrian Pickersgill 170
13	Neville Blackie 180	1 0	Jeffrey Boardman 171
14	Peter Ackley 180	½ ½	Paul Taylor 162
15	Chiedu Maduekwe 186	½ ½	Matthew Payne 159
16	Nevil Chan 176	0 1	Alan Palmer 157
<i>Exmouth Arms</i>		8½ 7½	

5.3.11	Herts		Sussex
1	Simon Knott 214 (W)	1 0	Luke Rutherford 212
2	Stephen Swanson 204	1 0	Feliks Kwiatkowski 206
3	Philip Bonafont 195	1 0	Brian Denman 200
4	Phillip Maguire 193	½ ½	David Grant 198
5	JN Fraser-Mitchell 192	0 1	Richard Almond 192
6	Simon Roe 189	0 1	Ken Norman 187
7	Jerry Rudge 188	½ ½	Geoffrey James 179
8	Paul Byway 187	0 1	Rasa Norinkeviciute 173
9	Liam Hylands 187	0 1	Paul Batchelor 175
10	Geoff Hollis 186	½ ½	Tim Spanton 172
11	Stephen Law 184	½ ½	Adrian Pickersgill 170
12	Peter Rice 178	1 0	Jeffrey Boardman 171
13	Tim Thurstan 175	0 1	Paul Taylor 162
14	Barry Morris 170	0 1	L John Cannon 156
15	Andy Tinker 165	1 0	Timothy Woods 149
16	David Bower 164	1 0	David Curtis 138
<i>Gadebridge</i>		8 8	

UNDER 180

2.10.10	Middlesex		Sussex
1	Michael Tasker 179 (W)	1 0	Brian Donnelly 179
2	George Dickson 178	½ ½	Jaimie Wilson 176
3	Alistair Compton 178	½ ½	Roland Lukosius 176
4	Nevil Chan 175	½ ½	Paul Batchelor 175
5	Charles McAleenan 178	½ ½	Rasa Norinkeviciute 173
6	Michael Brown 175	0 1	Tim Spanton 172
7	William Phillips 167	½ ½	David Roberts 172
8	D Ian Calvert 168	1 0	Adrian Pickersgill 170
9	Anthony Fulton 168	0 1	Paul Taylor 162
10	Pepe Vives 160	0 1	Mel Young 161
11	Christopher Kreuzer 159	1 0	Alan Palmer 157
12	David White 156	½ ½	Dona Strauss 150
13	Jonathan Kay 159	1 0	Tim Woods 149
14	John Woolley 156	½ ½	W John Marshall 148
15	Geoff Hermes 156	1 0	def
16	Richard Thursby 157	1 0	def
<i>Exmouth Arms</i>		9½ 6½	

COUNTY RESULTS

UNDER 180

27.11.10	Sussex			Surrey
1	Geoffrey James 179 (W)	½	½	Phil Stimpson 178
2	Jaimie Wilson 176	½	½	Julien Shepley 178
3	Paul Batchelor 175	½	½	Richard Edwards 177
4	Rasa Norinkeviciute 173	1	0	Ian Heppell 175
5	Tim Spanton 172	½	½	Geoff Marchant 171
6	David Roberts 172	½	½	David Sedgwick 169
7	Jeffrey Boardman 171	0	1	Owen Phillips 163
8	Adrian Pickersgill 170	½	½	Mark Daniels 164
9	Anthony Higgs 168	½	½	Nick Edwards 164
10	Nadezda Somova 165	½	½	Paul Barasi 165
11	Robert Fitzgerald 164	0	1	Francis Fields 157
12	Mel Young 161	½	½	Chris Clegg 157
13	Paul Selby 158	½	½	H Trevor Jones 154
14	L John Cannon 156	0	1	Paul Archer 156
15	Mick Reddie 156	1	0	Jonny Burch 144j
16	Robert Fisher 147	0	1	Adrian Waldock 143
<i>Hassocks</i>		7	9	

29.1.11	Essex			Sussex
1	D Ian Reynolds 178	½	½	Paul Batchelor 175
2	Philip Gregory 176	½	½	David Roberts 172
3	David Spearman 176	½	½	Jeffrey Boardman 171
4	Ian Hunnable 175	½	½	Adrian Pickersgill 170
5	Terry Whitton 174	½	½	Anthony Higgs 168
6	John White 172	½	½	Nadezda Somova 165
7	Chris Hampton 172	1	0	Paul Taylor 162
8	Jim Howson 172	½	½	Mick Reddie 156
9	David Millward 171	½	½	Alan Palmer 157
10	Matthew Shaw 165	½	½	L John Cannon 156
11	John Philpott 163	1	0	Tim Woods 149
12	Mark Murrell 162	½	½	Robert Fisher 146
13	Howard Grist 161	1	0	Julie Denning 140
14	Terry Donnelly 159	1	0	def
15	Syd Kalinsky 157	1	0	def
16	David Brock 154	1	0	def
<i>Wanstead</i>		11	5	

26.2.11	Sussex			Kent
1	Jaimie Wilson 176 (W)	1	0	David Morris 177
2	Paul Batchelor 175	1	0	Andrew Heard 162
3	Tim Spanton 172	1	0	Peter Wood 162
4	David Roberts 172	1	0	def
5	Jeffrey Boardman 171	0	1	Jorge Rios 156
6	Adrian Pickersgill 170	1	0	Simon Court 155
7	Anthony Higgs 168	1	0	Peter Hannan 148
8	Paul Taylor 162	1	0	Raphael Kalid 147
9	Alan Palmer 157	½	½	Gary Sharp 146
10	L John Cannon 156	½	½	David Gilbert 141
11	Mick Reddie 156	1	0	Gautham Reddiar 135
12	Robert Fisher 147	0	1	George Hollands 133
13	David Curtis 132	½	½	David Lettington 132
14	David Wallis 132	0	1	Rob Thompson 130
15	def	0	1	Peter Hickey 117
16	def	0	1	Targino Kalid-Filho 117
<i>Horsham</i>		9½	6½	

COUNTY RESULTS

9.10.10	Herts			Sussex
1	Barry Lane 158 (B)	½	½	Matthew J Payne 159
2	James Aldred 158	½	½	Paul N Kington 157
3	Mark Harris 157	½	½	L John Cannon 156
4	Jon Barnes 157	1	0	Michael J Reddie 156
5	Bruce Toper 156	1	0	Chris Yates 154
6	Brian Judkins 155	1	0	Tom Fitzgerald 153
7	Ian Mutton 152	1	0	Jerry LA Stone 151
8	Paul Kenning 150	0	1	Dona Strauss 148
9	Alan Gore 149	½	½	W John Marshall 148
10	Simon Charles 149	½	½	Robert HC Fisher 147
11	Keith Woodhouse 146	1	0	Timothy J Woods 145
12	Paul Laskier 143	½	½	Brian J Izzard 143
13	Mir Wali 142	0	1	Julie Denning 140
14	Mike Price 141	1	0	Mark Baldock 133
15	Ian Cross 141	½	½	Don Banks 133
16	Dave Belton 140	1	0	R Daniel Hirsch 117
<i>Harpenden</i>		10½	5½	
6.11.10	Sussex			Middlesex
1	Matthew Payne 159 (B)	0	1	Christopher Kreuzer 159
2	Alan Palmer 157	½	½	Ray Harper 158
3	Paul Kington 157	½	½	Nigel Colter 158
4	L John Cannon 156	1	0	Samuel Le 157
5	Michael Reddie 156	½	½	Richard Thursby 157
6	Christopher Yates 154	0	1	John Tobisch 156
7	Thomas Fitzgerald 153	1	0	Nick Collacott 153
8	Jerry Stone 151	0	1	Greg Breed 147
9	Dona Strauss 148	0	1	Michael Price 145
10	W John Marshall 148	½	½	Keith Jones 145
11	Robert Fisher 147	1	0	John Macdonald 143
12	Colin Parker 137	½	½	Martin Leanse 141
13	Peter Benson 137	½	½	Frank Zurstiege 140
14	Mark Baldock 133	½	½	John Torrance 140
15	David Wallis 132	1	0	David McNish 140
16	Roger Waddingham 128	0	1	Steve Sonnis 140
<i>Horsham</i>		7½	8½	
15.1.11	Essex			Sussex
1	Terry Donnelly 159 (B)	1	0	Alan Palmer 157
2	David Brock 154	1	0	Paul N Kington 157
3	Ken Groce 155	½	½	L John Cannon 156
4	Peter C Doye 153	½	½	Michael J Reddie 156
5	Tom Winter 154	0	1	Bob Lanzer 154
6	Ian Morgan 153	0	1	Tom Fitzgerald 153
7	David J Payne 152	1	0	Jerry LA Stone 151
8	David Smith 150	1	0	W John Marshall 148
9	John Wright 150	0	1	Robert Fisher 146
10	Ken Clow 149	½	½	Brian J Izzard 143
11	Peter Laundry 148	½	½	Mark Baldock 133
12	Ian Woodward 145	1	0	David Wallis 132
13	Alan Riddoch 145	0	1	Roger Waddingham 128
14	Malcolm Kingsley 141	1	0	Daryl Brooks 123
15	Michael Bradford 139	½	½	Ray Hunt 122
16	Peter Nickals 138	1	0	Richard Barrowclough 119
<i>Wanstead</i>		9½	6½	

COUNTY RESULTS

UNDER 160

12.2.11	Sussex		Surrey
1	Matthew Payne 159 (B)	1 0	def
2	Alan Palmer 157	½ ½	Simon Wrigley 158
3	Paul Kington 157	½ ½	Paul Archer 156
4	L. John Cannon 156	0 1	Chris Clegg 157
5	Michael Reddie 156	0 1	Sebastian Galer 155
6	Robert Lanzer 154	½ ½	Philip Armour 147
7	Chris Yates 154	0 1	Frank Kane 148
8	Tom Fitzgerald 153	1 0	Alun Harford 151
9	Jeremy Stone 151	½ ½	Stephen Ashworth 149
10	Dona Strauss 148	1 0	H Martin Cath 148
11	W John Marshall 148	0 1	Abraham Neviazski 147
12	Robert Fisher 147	½ ½	Adrian Waldock 143
13	Timothy Woods 145	½ ½	Jonathan Burch 144
14	Julie Denning 140	1 0	Krishna Mehendale 144
15	David Wallis 132	0 1	Albert Yiamakis 141
16	Mark Baldock 133	½ ½	David Howes 123
<i>Horsham</i>		7½ 8½	

26.3.11	Sussex		Kent
1	Matthew Payne 159 (B)	½ ½	Tom Stonehouse 159
2	Alan Palmer 157	1 0	Duncan Bell 159
3	Paul Kington 157	0 1	Patrick Smith 157
4	L. John Cannon 156	0 1	Jorge Rios 156
5	Mick Reddie 156	0 1	Mike Wiltshire 154
6	Bob Lanzer 154	0 1	Paul Rutland 152
7	Chris Yates 154	1 0	Geoff Bishop 150
8	Jerry Stone 151	1 0	Alan Sherriff 149
9	Dona Strauss 148	0 1	Barry Beavis 148
10	W John Marshall 148	1 0	Peter Hannan 148
11	Bob Fisher 147	1 0	def
12	Brian Izzard 143	0 1	John Attwood 145
13	Julie Denning 140	0 1	David Gilbert 141
14	Colin Parker 137	0 1	Malcolm Mourant 140
15	Mark Baldock 134	0 1	Bob Lane 139
16	David Wallis 132	½ ½	Nigel Norman 134
<i>Horsham</i>		6 10	

UNDER 140

23.10.10	Sussex		Essex
1	Marc Bryant 138 (W)	1 0	Peter Nickals 138
2	Peter Benson 135	0 1	David Gatheral 138
3	Martin Shaw 135	½ ½	Nick Pelling 138
4	Keith Osborne 134	1 0	Andrew Offord 136
5	David Wallis 132	1 0	Phil Foley 135
6	John Scholey 126	½ ½	Nikhil Sanghani 135
7	Daryl Brooks 123	0 1	Trevor Dickerson 131
8	Michael Dean 123	0 1	Simon Moth 134
9	Caroline Champion 122	0 1	Geoff Cooper 124
10	Mick Plumb 118	0 1	Adam Taylor 123
11	Richard Barrowclough 118	1 0	Debbie Taylor (r)
12	R Daniel Hirsch 117	0 1	Vladimir Chтым 120
13	Anthony Locke 106	0 1	Peter Smith 120
14	Jon Young 103	1 0	Herbie Alley 112
15	David Pople 93	0 1	Steve Woodall 111
16	David Bradley 82	0 1	Chris Phillips 102
<i>Horsham</i>		6 10	

COUNTY RESULTS

UNDER 140

13.11.10	Middlesex		Sussex
1	C Cooke 138	0 1	Marc Bryant 138
2	JT Harvey 138	1 0	David Curtis 138
3	G Parfett 136	½ ½	Keith Osborne 134
4	W Porter 136	0 1	David Wallis 132
5	M Staneland 133	½ ½	Roger Waddingham 128
6	PE Pickering 131	½ ½	John Scholey 126
7	BA Tysoe 130	1 0	Daryl Brooks 123
8	J Farrell 123	0 1	Michael Plumb 118
9	F Ainscow 128	1 0	R Daniel Hirsch 117
10	W Ransome 127	1 0	def
11	AA Fraser 126	1 0	Andrew Mayer 115
12	D Finlayson 124	1 0	def
13	G Snow 93	1 0	def
14	M Huba 119	1 0	def
15	M Lemman 118	1 0	def
16	M Mackenzie 117	1 0	def
<i>Exmouth Arms</i>		11½ 4½	

11.12.10	Herts		Sussex
1	Greg Paxton 139 (W)	0 1	Marc Bryant 138
2	Chris Russell 136	0 1	David Curtis 138
3	Barrie Saunders 133	0 1	Keith Osborne 134
4	Stephen Dicks 132	0 1	Roger Waddingham 128
5	Andrew Maclaren 131	1 0	def
6	John Leake 130	1 0	Daryl Brooks 123
7	Terry O'Sullivan 132	1 0	Caroline Champion 122
8	Tim Acton 129	½ ½	Richard Barrowclough 118
9	Jonathan Phillips 132	1 0	Michael Plumb 118
10	Austin McMahon 129	1 0	R Daniel Hirsch 117
11	Graham Howard 129	1 0	Andrew Mayer 115
12	Roger Kearns 127	1 0	David Bradley 82
13	Patrick Fitzgerald 136	1 0	def
14	Ray Claret 132	1 0	def
15	Chris Cook 124	1 0	def
16	Ed Magee 117	1 0	def
<i>Harpenden</i>		11½ 4½	

22.1.11	Surrey		Sussex
1	Nick Driver 139 (B)	½ ½	David Curtis 138
2	John Alexander 137	0 1	Marc Bryant 138
3	Gary Smith 137	½ ½	Peter Benson 135
4	James Mendes 134	0 1	Keith Osborne 134
5	Roger Barnett 132	1 0	David Wallis 132
6	Peter Rhodes 131	1 0	Roger Waddingham 128
7	Alexander Hardwick 131	1 0	John Scholey 126
8	Lamidi Evbuomwan 126	1 0	Daryl Brooks 123
9	John Davis 126	½ ½	Caroline Champion 122
10	Ken Chamberlain 125	½ ½	Richard Barrowclough 118
11	Selva Somupillai 125	0 1	Michael Plumb 118
12	David Howes 123	1 0	R Daniel Hirsch 117
13	Stephen Welch 122	0 1	Andrew Mayer 115
14	Richard Davis 122	½ ½	Norman Hawkins 112
15	Daniel Young 112	1 0	David Bradley 82
16	Yang-Jian Zhou 101	1 0	Macer Hall
<i>Coulsdon</i>		9½ 6½	

COUNTY RESULTS

UNDER 140

19.2.11	Sussex		Kent
1	Marc Bryant 138 (B)	0 1	Robert Lane 139
2	David Curtis 138	½ ½	Peter Thomas 138
3	Peter Benson 135	0 1	Stephen Milford 138
4	Keith Osborne 134	½ ½	Richard Woodfield 137
5	David Wallis 132	½ ½	David Keane 137
6	Roger Waddingham 128	1 0	Henry Cove 137
7	Toby Harris 127	0 1	George Hollands 133
8	Daryl Brooks 123	½ ½	Ian Clark 133
9	Caroline Campion 122	½ ½	Chris Siebert 132
10	Richard Barrowclough 118	0 1	Robin East 131
11	R Daniel Hirsch 117	0 1	Mark Stone 131
12	Andrew Mayer 115	0 1	Mick Hawkes 130
13	Norman Hawkins 112	0 1	Mark Houghton 129
14	David Pople 93	½ ½	Stephen Bond 126
15	David Bradley 82	0 1	Paul Andrews 126
16	Macer Hall	0 1	David Erwee 122
<i>Horsham</i>		4 12	

MINOR COUNTIES

21.5.11 Quarter-final	Hants		Sussex
1	Ian Thompson 209 (W)	½ ½	Luke Rutherford 212
2	Anthony Corkett 196	0 1	Feliks Kwiatkowski 206
3	Michael Yeo 195	½ ½	Peter Farr 201
4	Andrew McDougall 184	½ ½	Peter Kemp 189
5	William McDougall 181	0 1	Kenneth Norman 187
6	Oliver Gill 177	1 0	Mark Broom 186
7	Paul Cooper 176	1 0	Geoffrey James 179
8	David Fowler 172	0 1	Brian Donnelly 179
9	Fraser McLeod 171	0 1	Jaimie Wilson 176
10	Chris Bellers 170	0 1	Paul Batchelor 175
11	John Wilkinson 165	0 1	David Roberts 172
12	Roger Marsh 164	1 0	Jeffrey Boardman 171
13	Thomas Anderson 160	½ ½	Anthony Higgs 168
14	David EC Ross (jnr) 159	0 1	Alan Palmer 157
15	Steven Smith 158	½ ½	L John Cannon 156
16	David Thompson 157	½ ½	Brian Izzard 143
<i>(Drayton near Portsmouth)</i>		6 10	

11.6.11 Semi-final	Beds		Sussex
1	Andrew Ledger 233 (W)	½ ½	Luke Rutherford 212
2	Peter Constantinou 217	½ ½	Feliks Kwiatkowski 206
3	David Ledger 206	1 0	Richard Almond 192
4	Gary Kenworthy 208	½ ½	Kenneth Norman 187
5	Alan Brown 190	0 1	Brian Donnelly 179
6	Charles Tipleston 187	½ ½	Paul Batchelor 175
7	Graham Smith 177	½ ½	David Roberts 172
8	Paul Kendall 176	½ ½	Tim Spanton 172
9	Paul Habershon 173	0 1	Adrian Pickersgill 170
10	Branko Pribanich 169	0 1	Anthony Higgs 168
11	Peter Taylor 169	1 0	Alan Palmer 157
12	Vaughan Griffiths 169	1 0	L John Cannon 156
13	Adrian Matthews 164	1 0	W John Marshall 148
14	Michael Joseph 159	0 1	Julie Denning 140
15	Benjamin Grainger 144	1 0	David Wallis 132
16	Colin Solloway 120	1 0	def
<i>Milton Keynes</i>		9 7	

Sussex national champs...again

LAST year, this magazine led with the news that Sussex's top team were Southern Counties Champions.

This was a fine achievement by our Open team. However, at the time of the magazine's publication, two games were unfinished in the Ward-Higgs division of the County & District CC Championship but following adjudication Sussex emerged as national champions at CC.

Sussex were first with 16/22, followed by Essex and Yorkshire 15½.

This year, one Sussex game is unfinished but it is already clear that we will retain the title of national champions. Leading scores: Sussex 15/21, Essex and Yorkshire 14/21.

Who is Sussex CC Player of the Year? There were some fine performances, for example, Mark Broom drew with current British CC champion Julian Corfield.

This year I wanted to emphasise that this is a team event. Many players on the higher boards have received the Anslow trophy but this season it goes to Paul Selby.

Paul has been hacking away at or near the bottom for 24 years. This time, Paul's win came late in the season and clinched the title for Sussex. Well done Paul!

John Dodgson

C&DCCC Ward-Higgs 2010/11

Bd.	Sussex		Opponents		
E1	Macfarlane, D	0	Coleman, P GM 2622	1	Essex
E2	Kwiatkowski, FJ 2316	½	Davis, ME 2301	½	Warwickshire
E3	Almond, RJ	½	McKeown, P	½	Middlesex
E4	Cafferty, B	½	Horton, DJ	½	Kent
E5	Norman, KI	½	Beckett, PJ 2010	½	Yorkshire
E6	Elliston, RV 2126	1	Shepley, JM	0	Surrey
E7	Fryer, DW	1	Foster, S	0	Nottinghamshire
E8	Bryant, JL	½	Heyman, R	½	Northumberland
E9	Roberts, DN	½	Upham, JE	½	Hampshire
E10	Wheeler, JM 2157	½	McGrady, B	½	Lancashire
E11	Norton, T	1	Cage, S	0	Hertfordshire
N1	Dodgson, JA 2311	A+	Byway, PV	A=	Hertfordshire
N2	Broom, M	½	Corfield, J IM 2401	½	Essex
N3	Cunliffe, SD	1	Simm, Brian 2131	0	Warwickshire
N4	Stimpson, PM	1	Woolley, J	0	Middlesex
N5	Batchelor, P	1	Hampton, B	0	Kent
N6	Mansson, JC 2212	½	Milton, D 2189	½	Yorkshire
N7	Eastoe, LKG	1	Bates, T	0	Surrey
N8	Higgs, ARJ	1	Jacobs, PD	0	Nottinghamshire
N9	Britnell, MJ	1	Drummond, Sheila	0	Northumberland
N10	Selby, PR	1	Cowling, TI 1823	0	Hampshire
N11	Stone, JLA	½	Williamson, C	½	Lancashire
	Sussex score =	15	Composite team =	6	

ICCF ratings from October 2010 list

A very proud year



TOP TABLE: Anthony Higgs, junior organiser and webmaster; Dix Roberts, first team captain; John Cannon, chairman; CJ de Mooi, ECF president; Ian Comley, secretary and Nick Roberts, treasurer). The three trophies on the right are the Mid Sussex League KO Challenge Shield, the Division 1 Mowatt Cup and the Division 1 best percentage tankard, and the rest are the Horsham club trophies.



JOHN CANNON records the delighted reaction of Horsham players to news they had won the ECF Club of the Year award for 2010

THE news that Horsham Chess Club had won the ECF Club of the Year award came just in time to be included in last year's Sussex Chess News.

The award, consisting of an engraved glass trophy, a certificate and a stylish blue digital Saitek Competition Game Clock, was presented to the club chairman, John Cannon, by English Chess Federation president and TV Egghead CJ de Mooi, during a social hour prior to the club's annual meeting on September 7, 2010.

Mr de Mooi spoke enthusiastically of the need to keep club chess as strong and vibrant as it is at

Horsham, of his work as the ECF president and of the lifelong enjoyment provided by chess.

He also presented the three Mid Sussex League trophies won by the Horsham club and the club's own internal trophies.

In turn, Mr de Mooi was presented with a copy of the club's history and very kindly arranged for a second copy to be autographed by former world chess champions Gary

Kasparov and Anatoly Karpov and former British world finalist Nigel Short, at a prestigious fund-raising dinner held at Simpsons in the Strand the following evening.

Mr de Mooi spoke of the need to keep club chess strong and vibrant

for Horsham club

Horsham

www.horshamchessclub.btik.com

THIS season was another great success: firstly, being awarded English Chess Federation Club of the Year award, secondly, retaining the Mid Sussex League Knockout Shield and also playing 244 match games and 240 graded games in internal competitions.

The highlight of the Mid Sussex League performance for Horsham was winning the Knockout Shield for the second year in a row.

Horsham entered two teams this year and this resulted in a greater number of players enjoying this interesting competition. In the final, Horsham 1 were closely matched with St Francis & Haywards Heath 1.

Horsham had grading points of exactly 1,000 and their opponents 997. Horsham retained the trophy scoring 4½ points, which does not fully reflect such a closely contested match.

In the Mid-Sussex League we had two teams in division 1 and both acquitted themselves well. The first team were reigning champions and remained in the running for the title, finally ending the season in third place. Meanwhile, Horsham 2 successfully retained their position in division 1 by beating Worthing 1, Lewes 1



Proud moment... John Cannon, CJ de Mooi and Ian Comley

and drawing with Lewes 1. This is the first time a Horsham 2nd team has managed to maintain their position by right in the top division.

In division 2, St Francis and Haywards Heath 1 and Uckfield 1 dominated the season but Horsham 3 managed a very creditable fourth, being only half a point behind Woodpushers 1.

There was no doubt that the strength of teams in this division had been augmented since the previous year and Horsham 4 found themselves in tenth place, facing relegation to division 3 for next season.

Horsham 5 also played some highly competitive chess but some excellent victories including victories against Crowborough 2, East Grinstead 2 and Uckfield 2 represents true strength in depth.

Twelve Horsham players played 62 Sussex county games (81 last season) and scored 30 ½ points.

We had an even busier season than normal this year and needed an additional couple of weeks to complete all the internal games.

Phil Stimpson achieved the double by edging out Gavin Lock in both the Knockout competition and the Club Championship. Chris Heath won the second strongest all play-all and Roger Waddingham dominated the third all-play-all, with an impressive 14/16.

Paul Taylor triumphed over Peter Harbott to win the Knockout Plate. In the Lightning competition (10 seconds per move) Anthony Higgs was victorious and the Quickplay (10 minutes per game) was won by James Mansson, with Brian Donnelly picking up the Knockout Plate. Iain Climie scored 4½ out of 5 (90 per cent) in the Mid Sussex League and won the Knight Trophy, although the individual score from a Horsham player in a division according to the Mid Sussex league calculations - which require a higher number of games to be played - was Ian Comley in division 2 with 7.5/9 (83.33 per cent).

Both Gavin Lock and Amy Hoare qualified for the British championships and Amy had the added distinction of being nominated for English Chess Federation player of the year award.

Ian Comley

➡ **Other clubs - P28-31**

The Argumentatives

AFTER winning every match the previous season in division 3, The Args were bound to find it tougher this season in division 2.

However, it did not help losing the toss in every single match against the stronger sides - even though we then won it against the weaker ones!

The virtual retirement of Bob Huston and a long-term medical problem for Mike Garson (now happily recovered) left us having to default a game twice and we were without our top board in one key match.

Our lower boards were finding it tough to win at this level, but everybody fought hard and the team finished with 5.5 from 10 matches.

Individual scores (including the Knockout match lost 4-2 to champions Horsham) - Peter Farr 7/10; Jim Graham 8/11; Paul Kington 7/11; Dennis Collard 1.5/9; Mike Garson 1/6; Mike Card 1/6.

Paul Kington

Bognor and Arun

www.bognorandarunchessclub.co.uk

THE club has completed another enjoyable and successful season. In combination with Chichester, three teams were entered in the Portsmouth and District League as normal. The particular successes of the last two seasons were not quite repeated but the first team retained hopes of winning division 1 until the last few matches before finally ending the season in third place.

The B and C teams both finished runner-up to Portsmouth in their respective divisions. Jaimie Wilson performed well as normal with 69 per cent from division 1 matches and 57 per cent in division 2. Other above average performances were produced by Mick Plumb, Ray Hunt, Philip Wake, Martin Shaw, John Kalber, Andrew Keil and Celia Buckley. I, glory be, won the Ruth Rose cup for results scored throughout the season.

On the domestic front, Jaimie Wilson showed just a few signs of mortality; Mick Plumb

dented his unbeaten record in the Championship Cup (although it did not prevent a repeat of last season's final outcome) and it was dented more permanently by Keith Davies in the Knockout Cup, who went on to beat Bill Partridge in the final.

At the time of writing, the club's annual rapidplay tournament, the quickplay and the summer tournament are getting under way.

The club meets every Friday evening at the Bognor Club, Sudley Road. There is chess to suit every standard, the evening commences at 7pm and further details can be obtained from secretary Donald Close on 01243 267621 or by visiting the club website at www.bognorandarunchessclub.co.uk

Bill Partridge

Brighton

<http://www.brightonandhovechessclub.org>



New home... Brighton members Arthur de Silver, Rob Counsell, Sue Chadwick, Charles Holcombe, Kevin Gee, Anthony Stanton, Mustapha Othman and Peter Benson outside their new venue, the Avenue Bridge Club in Hove.

THIS has been an eventful year for the club, with some major changes. After years of deteriorating conditions on the top floor of the Railway Club, we were overjoyed to find a new club venue in the Avenue Bridge Club in Hove.

We moved in February to the first-floor of 15 Third Avenue where we are still able to continue with our twice-weekly meetings, now on Thursday evenings and Saturday afternoons.

We have a separate room for our library and computer, which has Fritz and wi-fi, and a

reference library in the bar downstairs. Transport links are good and parking an improvement.

Our old website was scrapped, and in April, we launched a brand new website which has continued to bring a steady stream of new members to the club. We now number 52, which is the highest we have been for many years.

This year, we again entered six teams in the Mid Sussex League. The club beat Hastings and St Leonards to win the McArthur Cup. Luke Rutherford took the Sussex County Championship title from Brian Denman and Geoffrey James tied to win the Veterans' Championship. Adrian Pickersgill won the East Sussex Queen. Other members have had successes with e2e4 Chess, which has chosen Brighton as one of its regular venues for congresses.

In early September, a team will take the ferry to Dieppe to take on Echiquier Dieppois for the fifth time, an annual event alternating home and away. This is a friendly match and club members make a weekend of it, enjoying French hospitality and cuisine. Results so far have been three wins for Brighton and Hove and a draw last year.

Other events have included seminars and new a members' open day, which we hope to repeat next year.

Overall, it has been an excellent year for the club and we hope to continue going from strength to strength with an ever-increasing membership.

Sue Chadwick

Chichester

CHICHESTER Chess Club has had another eventful year having, after a two-year period at The Fountain Inn, found ourselves once again looking for a new venue. The pub changed hands during the season and the Chess Club did not fit into the new owners plans.

However, after some searching, we have found an excellent new venue at The Wickham Arms, Bognor Road, Chichester. In our first two months there it is proving very popular

among club members, attracting an attendance of well into double figures. We meet at The Wickham Arms every Wednesday from 7pm.

On the playing side of things, we had another good season. The combined teams of Chichester and Bognor & Arun once again entered a team in each of the three divisions of the Portsmouth League.

The A team finished third in a very competitive first division. The B team finished second to a very strong Portsmouth A team in the second division, while the C team also finished second, again to a very strong Portsmouth B team.

Our B team once again reached the final of the Cole Plate but this time went down to a much stronger Fareham team, being heavily outgraded on all five boards. Mick Plumb, however, overcame a 39-point grading deficit to gain an excellent win for the one point.

The club championship was won by Ian Judd, with Steve Smith runner-up. John Kalber won the under 130 championship, with Mick Plumb and Philip Wake finishing joint runners-up.

We have introduced a new handicap competition this season which has proved very popular among members. The two front runners in this are Keith Davies and Michael Spence, with Keith, at the moment, holding the advantage.

We are looking forward to our very successful association with Bognor and Arun continuing in the Portsmouth League. We also hope our stay at our excellent new venue at The Wickham Arms proves to be a long and enjoyable one.

Philip Wake

Crowborough

www.crowboroughchess.org

TROPHY winners were as follows: Richard Chamier Cup, Chris Dunn, 51; Michael Redman, 43½; Don Grant, 39. Friends Cup, (top junior), Luke Pannett, 16; Matthew Pannett, 14; George Salimbeni, 12. Rapidplay, Michael Redman, 4; Chris Dunn/David Fryer, 3½; Luke Pannett (top junior), 2.

Autumn lightning tournament, Robert Elliston, 5½; Simon McDonald (Uckfield), 4½; Gary McCulloch, 4; Luke Pannett (top junior), 2. Spring lightning tournament, David Fryer, 7½; Jonathan Tuck, 7; Gary McCulloch, 5. (No juniors competed).

Don Grant

Eastbourne

http://www.escis.org.uk/Entry/View/Eastbourne_Chess_Club/3604

WE now have a new venue. About a year ago, we were given advance notice that Edgmond Evangelical Church was planning to combine with a church in Hampden Park and vacate their premises in Old Town, Eastbourne.

Already, the two churches have combined, though plans about their two buildings have run into difficulty.

It seemed to us prudent to look for another venue, and to make the change after the end of the match season.

Accordingly, we approached the Bridge Club in Wish Road, Eastbourne, and they have agreed to us using their rooms on Friday evenings, when they rarely meet. Wish Road is near the town centre.

In the Mid Sussex League, Eastbourne had a satisfactory season, with our three teams - playing in different divisions - comfortably avoiding the bottom places.

Rasa Norinkeviciute held her own on top board for the first team. The rest of the regular team scored just below 50%, but Vince Ellis and Angel Chung did better.

Vince was undefeated in the eight games he played for all three teams. Angel played on top board for the second team in all their matches, with a 50% record. Chris Hutton scored 6.5/9 in division three.

The present holders of our club competition trophies are as follows: Championship : Angel Chung and Warwick Silber. Open Knockout and Southdown Rapidplay : Angel Chung. Christmas Rapid play : Mike Elgin and Vince Ellis.

This should be the present secretary's final report. It has been provisionally arranged that I serve until the end of the year.

I would like to record that I have received a good deal of support from other office-holders and members. Email can be a great help in solving difficulties, and the evenings when I might have found myself alone in the club room at 10.30 pm amidst tables and chess equipment are long gone.

John Herbert

East Grinstead

www.egchess.org.uk

THE 2010/11 season saw us enter two teams in division 3 of the Mid Sussex League. The first team's efforts were rewarded with second place and promotion to division 2. The second team scored a hard earned three-way tie at the lower end of the table.

Our first team player, Professor Ian Dennis, was acknowledged the honour of being the most successful player in the division, with a commendable 7½/8 games.

Finally, this year we published ourselves in 'Find a Club' on the ECF website - recognition at long last. Hopefully, we may now attract some budding chess masters and rabbits to swell our depleted ranks.

Robert Fisher

Hastings & St Leonard's

www.hastingschessclub.co.uk

2010/2011 was once again a very successful year for the club.

Our 1st team, captained by Richard Almond, won the Mid Sussex League and after more than 20 years, our home matches can now be held "at home".

Our 2nd team also retained their place in division 1. Joe Sharp, who has captained the 2nd team for seven years, is retiring from the post.

During Joe's captaincy, the team gained promotion from division 4 to division 3 in season 2003/04 and promotion in successive years to division 1, including coming first in division 2 in 2005/06. They have been in division 1 for five successive seasons, the best position being in 2009/10, when they won four matches out of nine, with one draw, finishing just one match point behind our 1st team.

The Club Championship was won by 15-year-old Jude Lenier, with 9.5/11, two points ahead of very strong opposition. We all hope he will follow in the footsteps of Stuart Conquest, who won the Championship at 12 years old, in becoming a grandmaster.

There was a tie for first place in the Pelton Cup between Derek Cosens and up and coming junior Ollie Willson 6.5/10. Robert Smart won the Rush Cup 8.5/10

Our U-170 team, captained by Paul Kelly, won the Kent League Lewis Cup 3½ - 2½. The final was against Rainham.

Unfortunately, for the third year running, Brighton & Hove beat us in the McArthur Cup.

Rapid play has been very popular and well attended by non members as well as members. Thanks must go to Paul Buswell and John Driver for arranging these tournaments.

We spent a very enjoyable weekend in Bethune (twinned town with Hastings) at the invitation of their chess club. Once again, they entertained us as only the French know how. Hastings came away winners.

During the year, Alan Barton gave a series of talks on the artistry of chess and Alfredo Luaces gave some lessons aimed for the lower grades. Bernard Cafferty gave two talks, one on adjudication and the other on candidate moves (a subject which is very rarely mentioned in chess literature). All these talks and lessons were very enjoyable and well attended by members.

Sadly, we lost one of our long-standing members, Leo Shea. He will be missed as he was at the club most days.



*They
entertained us
as only the
French know
how*

The club house (Pelton House) is looking very smart with the decoration inside and out being completed and new PVC windows installed.

Membership is up and it is nice to see some more women joining. The club is open every day between 1 – 9 p.m. Visitors and members are welcome.

For more information, please ring 0793 3742352 or contact us at info@hastingschessclub.co.uk

William Penfold

Worthing

www.worthingchessclub.co.uk

WORTHING had a reasonable season, finishing about mid-table in divisions 1 and 2, with a notable increase in membership, especially juniors

Worthing will be fielding a third team for the first time in my tenure as club secretary. Another notable addition to the club ranks is FM Alex Therrien, a welcome addition to the 1st team.

Matthew Payne continues to impress at junior level, recently coming joint first in the e2e4 Gatwick Major in June. Morgan Blake was runner-up in the Minor. Both have played well for the club this season.

Cassie Graham (British U10) and Arthur Graham (British U14) will be at the British Championships at Sheffield this year. In fact, it's a family affair, with William and dad Dave participating in other events.

Dave Graham is club champion. I think that's his 10th title since the 80s! He also won the Knockout.

William Graham won The Derrick Trophy, with Matthew Payne winning the Knockout Plate.

Colin Parker won the Ladder Tournament, and finally yours truly won the Bernard memorial Handicap Rapidplay.

Chris Jones

What a year that was!



Sussex youngsters were victorious in the national Under 9, Under 12...and Under 18 competitions. CAROL GRAHAM reports.

THE past 12 months has been another very busy period for Sussex Junior Chess.

An executive committee under a formal constitution was elected for the first time in April, 2010.

Since then, it has met regularly and devoted many hours of energy, patience and good humour to bringing our constitutional framework and practices up to date.

We extend our thanks to 2010-2011 chairman Brian Stockham for the huge part he played in this, and welcome Tom Borland as incoming chairman.

During the year, the executive committee approved the new SJC Academy initiative, whereby SJC establishes 'hub' schools as bases from which to offer fun events in term-time for first-time players in neighbouring schools.

Brian Stockham is now exercising his considerable enthusiasm as academy director for both Uckfield and Burgess Hill. Two more academies have been established in Haywards Heath and Crawley under the stewardship of Bob Noyce, and it is an aim for next



Winning ways...U18 and U14 champions, top, and the winning U9 team

season to expand the programme further.

In terms of results, Sussex have had a fantastic season, being victorious in the national U9, U12 and U18 competitions, with pictures of the three teams now jostling for space on our website.

The U11 team, and our exceptionally young U11 girls team, achieved highly creditable bronze positions in their events. On an individual level, we had Josh Higgs, David Liu and Brian Tarhon join Billy Twigge-Molecey in the England U11 squad, with Jonny Burch, Daniel Sutton and Ollie Willson continuing to represent England in higher age groups; while the achievements of Amy Hoare and Cosima Keen were truly remarkable, Cosima being selected to represent England in the World U12 Girls Championship in Brazil later this year.

SJC runs what we believe to be the largest intra-county school chess events in the UK.

The Butler Cup and Primary Cup came to gripping conclusions at Great Walstead and London Meed, respectively.

Congratulations to the winning teams from Ashdown House (Forest Row) and Broadwater (Worthing), and sincere commiserations to Cophthorne Prep, who lost both finals by the narrowest of margins.

All the participants owe a huge debt of gratitude to Leslie Simpson, who juggles the various demands of Sussex' geography and road system and divergent school



*Awaiting the signal...
action about to get
underway*



*A study in
concentration...
as the game
nears its end*

calendars with consummate skill.

Attendance is flourishing at our training days and tournaments – more than 100 attended the last grand prix tournament of the season for the first time in several years.

As usual, we hosted a 'Megafinal' for the UK's largest chess competition, the "UK Chess Challenge", which attracted over 350 children from all corners of the county.

More than 100 of them qualified for the regional stage

JUNIOR CHESS



Tense finish...a match in the Primary Schools cup final, above



Faces of delight... the UII's girls team, third in the national final, above, and other scenes from a busy year



(the 'Gigafinal') in Reading and we expect a dozen or so to make it through to the national final (the 'Terafinal') in August.

Last July saw the return of the Weald Chess Congress after a gap of a year. This was

a very successful event, attracting several IMs into the Open section while at the same time providing a bridge into adult competition for our emerging juniors. We are once again running this event this year and hope to see some of you there.

Finally, the committee is very grateful for the financial support of Deutsch (UK) and the Sussex Community Foundation, which has helped to make all of the above possible.

JUNIOR CHESS



All smiles... the U12 team, left, and Amy Hoare runs a training day for the girls



Making the right move... the Weald Chess Congress, above, and youngsters enjoying their chess during the season, left



Team effort... the successful U18 team - ECF national champions



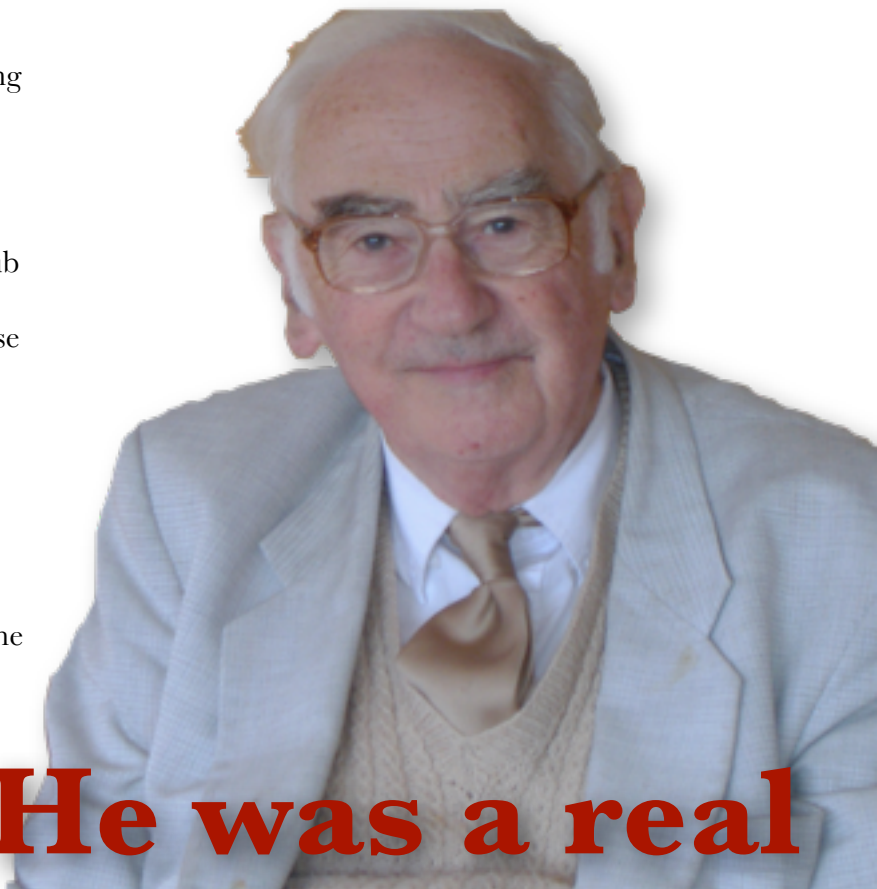
Few could have done more for county chess than Doug

I FIRST got to know Douglas Opie in the early months of 1978 when my supply teaching took me to Falmer High School.

Douglas was a Latin teacher, who was also responsible for working out the timetable for the school. I was able to observe the enthusiastic way in which he ran the chess club and I noted the local rivalry that existed between his promising young players and those of Dorothy Stringer School where Paul Watson was a teacher.

He used to run the chess club at the school and his young players often had hard-fought games with local rivals Dorothy Stringer School, where Paul Watson was the chess master.

Douglas seems to have come to Sussex in the early 1970s and he became a member of Haywards Heath Chess Club. He was very



Douglas: He was a real

enthusiastic about encouraging young players and from 1975 to 1981 he held junior congresses at his school.

In 1975, he was also appointed as Sussex third team captain. He was still in post in 1981, when the county reduced the number of teams from three to two. Douglas then became second team captain, a post he held until 1989.

Douglas decided to enter his school into the Mid Sussex League in 1976 and in its first season the team gained promotion from the third to the second division.

By 1980, Falmer had made it into the first division and in its first season in this division came equal first with Dorothy Stringer. The team was not restricted to juniors and, as well as Douglas, I myself played for the team a number of times as did Paul Selby.

Success was short-lived and in 1982 the club was relegated to the second division. In 1983, the club's withdrawal from the Mid Sussex League coincided with Douglas's departure

from Falmer School and the beginning of his retirement. Later that year, he joined Hassocks Chess Club.

Douglas's retirement did not mean that chess played only a small part in his life. In 1983, he took over the post of tournament controller for the county competitions and he continued in this role until 1988.

He was also appointed county match controller for the Southern Counties Chess Union in 1984, though I do not have any information as to the length of time that he held this post. About 1987, a new post of deputy president was created by the Sussex County Chess Association and Douglas was appointed to this position.

Junior chess in the county received a boost in 1987 when the first of several annual county junior congresses was held at Dorothy Stringer School.

Douglas often gave a speech at the prize-giving of these congresses. He continued to be a

He was very enthusiastic about encouraging young players

Opie, who died in July. Here, BRIAN DENMAN pays tribute.

member of Hassocks until 1994, but the fragile health of his wife, Doreen, led to his withdrawing from active chess for a few years.

Early in 2000, the family was struck by tragedy. A virulent flu virus spread throughout the country and Doreen became very ill. Douglas told me that he called his doctor, but it seems that there was a delay in the visit. By the time that help arrived, it was too late and Doreen had passed away. On the same day, Douglas suffered a heart attack, probably because of the shock of what happened.

For the next couple of years or so, I used to visit Douglas at Haywards Heath every few weeks and we went to a restaurant to have a meal. He rejoined Hassocks and for a time planned to stay in Sussex where his chess friends were.

However, his health was now less robust and he was conscious of the fact that his son and

He started to suffer from dementia and about a year ago he entered a home. He settled in well, but not long ago a stomach bug weakened him and he died on July 5, aged 87.

At the SCA's annual meeting in August, 2010, Douglas had been honoured by becoming an honorary life vice-president of the association, an award which few players have received.

The amount of work that he carried out for the county had been immense and he clearly deserved the award. He was well liked and of kindly disposition with a calm and logical way of thinking. He was a family man, who also loved cats.

As a player, he seems to have been at his strongest in the mid-1970s, when he reached a grading of 157. He had a cautious style and it was a joke between him and me that he liked to play P-KR3 and P-QR3 in the opening

inspiration to us all

daughter-in-law were many miles away at Nuneaton. Eventually, he made the decision to put his house on the market and in 2002 he moved to that town. Even then, he had his doubts and contemplated moving back to Sussex.

He really used to enjoy coming to the SCA's annual meeting every year and seeing old friends. Despite the travelling, he joined Crawley Chess Club and made occasional appearances for that club in the Mid Sussex League. He also played some games in the county teams and was a useful person to have as a reserve. In 2006, when there was a shortage of candidates to fill SCA posts, Douglas offered to once again become tournament controller. This was difficult for him as he did not have email and lived so far away from Sussex.

However, he persisted in the task before him and was still in post early in 2010, when there was a sudden decline in his health. The cold weather had aggravated his angina and he became virtually housebound.

whether white or black. In 1985, he won the Sussex Veterans' Championship.

Regrettably, I have only one of Douglas's games in my database. It is, however, perhaps fitting to end with a game against another major organiser for the county (in fact, the main organiser), Paul Watson. Sadly both players are now deceased.

Paul Watson v Dr Douglas Opie, Varndean v Haywards.Heath II (probably played in Mid-Sussex League Div. 2), November 6, 1975

1.e4 e5 2.Nc3 Nf6 3.f4 Nc6 4.Nf3 d6 5.Bc4 h6 6.d4 Bg4 7.dxe5 Bxf3 8.Qxf3 dxe5 9.Be3 Bd6 10.0-0-0 Qe7 11.Rhf1 a6 12.g4 exf4 13.Bxf4 Ne5 14.Bxe5 Bxe5 15.Nd5 Nxd5 16.Bxd5 0-0 17.h3 c6 18.Bb3 b5 19.Qf5 Bf6 20.Rd7 Bg5+ 21.Kb1 Qf6 22.Rxf7 Rxf7 23.Bxf7+ Kh8 24.Qxf6 Bxf6 25.Rd1 Rf8 26.Bg6 Rd8 27.Rxd8+ Bxd8 28.Be8 c5 29.a4 b4 30.Ka2 a5 . White had a slight advantage in the final position, but according to Fritz 10 it should not be enough to win. 1/2-1/2



JULIE DENNING pays tribute to David Langridge, a man who was deeply passionate about his chess

LONG-TIME stalwart of St Francis Chess Club, David Langridge, passed away at the end of last year.

Although most closely associated in the Mid Sussex League with St Francis, the club he represented in the league and where he used to work, David lived in Hove and also belonged to Brighton & Hove Chess Club.

David had played at these clubs for around half a century! He was also a regular player in Sussex county teams and was an avid follower of chess matters generally.

David had been ill for some time, but remained an active player at club, league and county levels throughout last season and attended the league annual meeting in May last year.

The funeral was held on December 13 at the Unitarian Church in New Road, Brighton.

He was an avid follower of chess matters generally

He was fondly remembered at his funeral as “that unusual combination of eccentric yet unassuming”!

I am indebted to Brian Denman, who has passed on the following record of a game in which David beat Tony Miles in a simultaneous match in 1976, and which appeared in the Brighton & Hove Gazette on June 4, 1976:

Tony Miles v David Langridge, 35-board simultaneous at Brighton, May 22, 1976

1.c4 c5 2.Nf3 Nf6 3.d4 cxd4 4.Nxd4 d5 5.cxd5 Nxd5 6.Nb5 Qa5+ 7.N1c3 Nxc3 8.Nxc3 e6 9.e4



ST Francis Hospital...David Langridge worked there and played for the club in the Mid Sussex League

That’s grand:
The day
David
mastered
Tony Miles

5.cxd5 Nxd5 6.Nb5 Qa5+ 7.N1c3 Nxc3 8.Nxc3 e6 9.e4 a6 10.Bd2 Nc6 11.Bc4 Qc5 12.Bd3 Qd6 13.Qe2 Nb4 14.Bb1 Bd7 15.0-0 Rc8 16.Rd1 Qc7 17.a3 Nc6 18.Bg5 Bc5 19.Nd5? exd5 20.exd5+ Ne5 21.d6 Bxd6 22.f4 Bg4 23.Qe1 Qb6+ 24.Kh1 Bxd1 25.fxe5 Be7 26.Bxe7 Qxb2 27.Bb4 Qxa1 28.e6 f6 29.h3 Bc2 0-1

Sussex Open v Middlesex, February 5
White: Colin MacKenzie, Middlesex
(187) Black: Dix Roberts, Horsham
(172)

Dix Roberts in “queening mode”. 1.c4 Nf6 2.g3 c5 3.Bg2 g6 4.Nc3 Bg7 5.a3 Nc6 6.Rb1 0-0 7.d3 d6 8.e3 Bd7 [8...Bf5 9.Nf3 d5 is more dynamic] 9.Nge2 e5 10.0-0 Qe7 11.b4 Rae8? [11...cxb4 12.axb4 a6 is better] 12.Nd5 [12.bxc5 dxc5 13.Rxb7 Qe6 14.Rb5 just seems to win a pawn. No idea why my opponent didn't do this.] 12...Nxd5 13.cxd5 Nd8 14.bxc5 dxc5 15.Nc3 b6 16.a4 Nb7 17.Ba3 [I was expecting 17.Nb5 when I was planning 17...Bxb5 18.axb5 Nd6 when White is a bit better but black has a playable position] 17...Rc8 setting a trap 18.d4 into which white falls! 18...exd4 19.exd4 Bxd4 20.Qxd4 cxd4 21.Bxe7 dxc3 22.Bxf8 Kxf8 23.Rfc1 Bxa4 24.Be4 Nd6 25.Bd3 b5 26.f3 Rc5 [26...c2 27.Rb2 (27.Ra1 Rc3) 27...Nc4 is more efficient] 27.Kf2 a5 [Again 27...c2 28.Rb2 Rxd5 29.Bxc2 Rd2+ 30.Kg1 Nf5 is cleaner. I was getting a bit short of time hereabouts.] 28.Ke3 b4 [28...Nf5+] 29.Kd4 Nb7 30.Ra1 [30.Ba6 c2 31.Ra1 b3

32.Bxb7 Rc7 33.Ba6 b2 34.Bc4 bxa1 Q+ 35.Rxa1 Bb3 wins. I just about saw this in time!] 30...Bb3 31.Be4 f5 Now it is straightforward. 32.Bd3 Rxd5+ 33.Ke3 Re5+ 34.Kf4 Rd5 35.Ke3 Nd6 36.g4 f4+ 37.Ke2 a4 38.Rab1 Rd4 39.h4 Bf7 40.h5 a3 41.hxg6 hxg6 42.Rh1 a2 43.Rh8+ Ke7 44.Re1 Kf6 45.Rg1 b3 46.g5+ Ke7 47.Ra8 b2 48.Ra7+ Kd8 49.Rh1 a1 Q Promotion No.1 50.Rhxa1 bxa1 Q Promotion No.2 51.Rxa1 Bc4 52.Bxc4 Rd2+ 53.Ke1 Nxc4 54.Ra8+ Kd7 55.Ra4 c2 56.Rxc4 Rd1+ 57.Ke2 c1 Q Promotion No.3 58.Rxc1 Rxc1 We played a few more moves as I only had about three minutes left. I did briefly dream of promoting two more queens but my opponent resigned before this could happen! 0-1

Dix Roberts

• John Cannon adds: This is somewhat of a curiosity, since players don't queen three pawns in a single game very often! (Curiously, I queened two during a time scramble in Sussex Open v Herts on March 3, finishing with a queen count of 2-0 – one of the rare bright spots in my season!)

Mid Sussex League Knockout Final, May 17
Ian Comley v David Curtis

1.c4 g6 2.g3 Bg7 3.Bg2 c6 4.d4 d6 5.e4 Qc7 6.Nc3 e5 7.Nge2 Be6 8.d5 Bd7 9.0-0 Ne7 10.Be3 cxd5 11.exd5



Aggressive play is called for in the final of the MSL Knockout!

11... f5

Black shuns the opportunity to grab a pawn at the risk of activating White's pieces eg

11...Qxc4 12.Ne4 Nf5 13.g4 Nxe3 14.Nxd6+ Ke7 15.fxe3 Kxd6 16.Rc1 Qb4 17.Rxf7 Bh6 18.Rc6+ bxc6 19.dxc6+ Kc7 20.cxd7 Bxe3+ 21.Kh1 Qd2 22.Qb3 Qe1+ 23.Rf1 when White is winning 12.c5 0-0 13.Rc1 a6 14.c6! bxc6 15.Na4 Exploiting the pin on the Queen to threaten Nb6 and Black's knight on b8 has no squares at all

15...Nc8 16.dxc6 Be6 17.Bd5 Bxd5 18.Qxd5+ Rf7 Under pressure Black makes a mistake (Kh8 was better) but white needs to press on with urgency 19.Nb6 Nxb6 20.Bxb6 Qc8 Black declines the piece offer 21.c7 Nd7 22.Qxa8 Now Black wisely declines the Queen offer Nxb6 Black had hoped this was the saving chance but now a little move proves decisive... 23.Qb8 1-0

Ian Comley

**4NCL Division 3 R10, January 5 White:
James Mansson (e2e4.org.uk 2 and Horsham)
Black: Justin Hadi (Oxford 2)**

A nice 4NCL game with notes by James Mansson. 1.Nf3 Nf6 2.c4 h6 ?! (A dubious looking idea - why does Black want to get in ...g5 so early?) 3.b3 (This counter-fianchetto seemed a logical response, as in other openings, e.g. 1 e4 c5 2 a3 g6.) 3... g5 4.Bb2 Bg7 5.g3 d6 6.Bg2 e5 7.d3 (Preparing h4, by supplying the knight on f3 with a comfortable retreat square.) 7... Nc6 8.h4 (I decided to fix the kingside, so as to neutralise any value ...g5 might have as a pawn storm there when I castle.) 8... g4 9.Nfd2 Bf5 10.Nc3 Qe7 11.Nd5 Nxd5 12.cxd5 Nb4 ?! (This knight is now driven into a passive position) 13.a3 Na6 14.b4

O-O 15. O-O Rac8 16. 4 Bd7 17.Nc4 f5 ?! (This leaves the Black position static and full of weaknesses.) 18.exf5 (!) Bxf5 19.Ne3 h5 20.Nxf5 Rxf5 21.Be4 (White now has a clear advantage. Black's pieces are passive, his kingside is weak, and the plan of Qc2, Rae1, and d4 is hard to meet.) 21... Rf6 22.Qc2 Nb8 23.d4 ! (Rather than Rae1 first, which would allow time for ...Nd7.) 23... Nd7 24.Bf5 ! (Pinning the d7 knight and therefore threatening to capture on e5. Black now loses material because he cannot meet all the threats.) 24... e4 (24...exd4 25.Rae1 Qd8 26.Be6+) 25.Bxe4 Qf7 26.Rae1 Nb6 27.Bc1 Rf8 28.Bg5 Rf3 29.Bxf3 gxf3 30.Re7 Qxd5 31.Qg6 Qxd4 32.Bh6 (White has too many pieces on g7, so the Black position collapses.) 1-0

**Horsham v Args, November 16 James
Mansson v Peter Farr**

1 d4 Nf6 2 c4 c5 3 d5 e6 4 Nc3 exd5 5 cxd5 d6 6 g3 g6 7 Bg2 Bg7 8 Nf3 0-0 9 0-0 a6 10 a4 Re8 11 Nd2 Nbd7 12 Nc4 Ne5 13 Na3 Rb8 14 h3 Nh5 15 Kh2?! g5?! 16 Rb1? f5 17 f4 gxf4 18 gxf4 Qh4! 19 Kg1 Ng4! 20 Qe1 Bd4+ 21 e3 Qxe1 22 Rxe1 Nxe3 23 Bxe3 Rxe3 24 Rxe3 Bxe3+ 25 Kh1 Ng3+ 26 Kh2 Bxf4 27 Bf3 Kf7 28 Kg2 Bd7 29 Nc4 b5 30

axb5 axb5 31 Na5 b4 32 Ne2 Nxe2 33 Bxe2 Rg8+ 34 Kf2 Kf6 35 Nc4 Rg3 36 Bf1 Be8 37 Re1 Bf7 38 Nb6 Rb3 39 Re2 Bh5 40 Re6+ Kg5 41 Nc4 Bf7 42 Re7 Bxd5 43 Rxh7 Rf3+ 44 Kg1 Rxf1+ 45 Kxf1 Bxc4+ 46 Kf2 Be5 47 Ra7 d5 White resigns 0-1

• Paul Kington comments: This is a game from our modest yet brilliant top board Peter Farr, played in the Knockout against champions Horsham and a very strong opponent.

**Mid Sussex League, Horsham 2 v
Crowborough 1, March 11 A. R. J. Higgs
(168) v G. P. W. Salimbeni (205)**

It's tricky being top board of a 2nd team in the top division. Your opponents are always formidable, which makes it more important than ever to capitalise when chances come along!

1.e4 g6 2.d4 Bg7 3.Nf3 a6 4.c4 d6 5.Nc3 Nd7 6.Be2 e6 7.0-0 Ne7 8.Qc2 0-0 9.Rb1!? [An interesting waiting move. The potential activity on the queenside encourages Black to commit in the centre. I was expecting 9...f5 but Black's choice looks ok] 9...d5 10.Bg5 [Not 10.exd5 exd5 11.Nxd5 Nxd5 12.cxd5 Nb6 with a very comfortable game for Black] 10...dxe4 11.Nxe4 h6 12.Bd2 Nb6 13.Bc3 Bd7 14.Rbd1 Bc6? [A mistake which gives White a big initiative, although even Fritz doesn't appreciate the strength of White's next move for a while]

15.d5! exd5 16.Bxg7 Kxg7 17.Qc3+ f6 [The point of White's pawn sacrifice. Black cannot allow 18.Nf6+ so he is forced to damage his kingside further and suffer a terrible weakness on e6] 18.Nd4 Qc8 19.Nc5 Re8?! [Probably missing White's 21st move, otherwise I'm sure Black would have preferred 19...Rf7] 20.Nde6+ Kf7 21.Bg4! [A nasty surprise. The point is that 21...f5 allows the immediate 22.Qg7 mate and 21...Nf5 22.Bxf5 gxf5 23.Rfe1 leads to terminal problems for Black on the kingside] 21...Qb8 22.Qc3 Ng8 23.Qg3 Re7? [Holding c7, but now the g-file is indefensible] 24.Bh5! Rxe6 25.Qxg6+ Ke7 26.Qg7+ [26.Qf7+ is quicker. George sportingly allows me to play the king hunt out to mate] 26...Kd6 27.Nxe6 Kxe6 28.c5! Nc4 29.Bf7+ Kf5 30.Qg6+ Kf4 31.g3+ Kf3 32.Qf5+ Ke2 33.Rfe1#

Anthony Higgs

Mid Sussex League Division 1, Horsham 2 v Worthing 1, board 1, December 1 Mike Forster v David Graham

1. e4 e6 2. d4 d5 3. Nc3 Bb4 4. e5 Ne7 5. a3 Bxc3+ 6. bxc3 c5 7. Qg4 O-O 8. Bg5 (overlooking the strong reply) 8...Qa5 9. Bxe7 (9. Bd2 c4 10. Nh3 f6 11. f4 Qa4 12. Qd1 Nbc6 13. Be2 fxe5 14. fxe5 Ng6 15. Bg5 Bd7 16. Bf3 h6 17. Be3 Nh4 18. O-O Nxf3+ 19. Rxf3 Rxf3 20. Qxf3 Qxc2 21. Rf1 Qg6 22. Nf4 Qf7 23. Qg4 Rf8 and 0-1 R. Slagter v J.Hummel, Groningen 2006) 9... Qxc3+ 10. Ke2 Qxc2+ (10... Nc6 11. Rc1 Nxe7 12. Nf3 Nc6 13. h4 f6 14. exf6 Rxf6 15. dxc5 e5 16. Qg3 Rxf3 0-1 A. Seidler v S.Schweber, Buenos Aires 1977 or 10... Nc6 11. Bxc5 b6 with advantage) 11. Ke3 cxd4+ 12. Kf4 Qxf2+ (12... f6 13. Ne2 fxe5+ 14. Kg3 Rf7 with advantage) 13. Qf3 (The

tempting 13. Nf3 loses to 13... f6, with the crushing threat of g5) 13... Qd2+

14. Kg3 Nc6 15. Rd1 (chasing the black queen from her excellent position) 15... Qh6 16. Bxf8 Nxe5 17. Qf4 Qg6+ 18. Kh4 (much weaker is 18. Kf2 Ng4+ 19. Ke1 e5, when the active black pieces provide a winning initiative) 18... f6 19. Re1 a good psychological move, putting black under significant time pressure, although with hindsight 19. Bb4 Nf7 (19... Qc2 20. Qxd4 Qb3) 20. Bd3 Qxg2 21. Qg3 Qxh1 (21... g5+ 22. Kh5 Qxh1 23. Rf1) 22. Rf1 Bd7 23. Nf3 g5+ 24. Kh5 Be8 25. Nxc5 Nxc5+ 26. Kh4 may be better) 19... Nf7 20. Bxg7 Kxg7 21. Qg4 (if 21. Qxd4 Qg5+ 22. Kh3 e5+ 23. g4 exd4 wins) 21... Ng5 22. Qh5 white now offered a draw, which was sufficient to win the match. Black was very short of time and accepted.

Mike Forster

Hastings & St Leonards club championship, March 7. Bernard Cafferty v Rasa Norinkeviciute

Bernard Cafferty writes: "I used the game in a talk at the club about listing candidate moves. At move 12, White has at least five moves that come into consideration."

1 b4 d5 2 Bb2 Nf6 3 e3 e6 4 a3 c5 5 bxc5 Bxc5 6 d4 Bd6 7 c4 dxc4 8 Bxc4 0-0 9 Nf3 Qa5+ 10 Nbd2 Nbd7 11 0-0 e5?!

If Black could free her game so easily, then White's opening has been ineffective, but after 14 minutes' thought I hit on a move which the computers don't give – an achievement in this day and age! Clearly, White wants to play Nc4, so ...12 Bxf7+ Rxf7 13 Nc4 Qd5

The main line. If 13...Qb5, then White's best is 14 Nxd6 Qxb2 15 Qd3! winning in view of the double threat 16 Rfb1 winning the Q, and 16 Qc4.

14 Nxd6 Qxd6 15 dxe5 Qe7

To struggle on in a middle game. 15...Qxd1 16 Rfxd1 Ne4 18 e6 is equally hopeless.

16 exf6 Nxf6 17 Qd4 b6 18 Ne5 Rf8 19 Rfd1 Bf5

Not 19...Bb7 20 Qc4+ Kh8 21 Qh4 threatening both Rd7 and Ng6+.

20 Rac1 Ne4 21 Nc6 Qb7 22 Qd5+ Kh8 22 f3 Nc5 24 Qd6 Rae8 25 Nd4 Bc8 26 e4 Rd8 27 Qg3 Qf7 28 h3 Rfe8 29 Nf5

To get rid of opposite-coloured bishops and open fire against g7.

29...Bxf5 30 exf5 Rxd1+ 31 Rxd1 Rg8 32 Qg5 Nd7 33 Rxd7?

The end of the game is marred by time pressure. I had about three minutes left, while Rasa had only 30 seconds to reach move 40. Simply 33 Rd6 wins without much trouble.

33...Qxd7 34 f6 Qd1+? Neither player saw 34...Rc8 35 fxe7+ Kg8 and it is probably a draw since Black has a potential passed pawn on the Q-side.

35 Kh2 Qd6+ 36 Be5 h6 37 Qxg7+ Rxg7 38 fxe7+ Kg8 39 Bxd6 Kxg7 40 Kg3 Kf6 41 Bb8 a6 42 Kf4 b5 43 Bd6 and the flags having fallen, Black resigned.

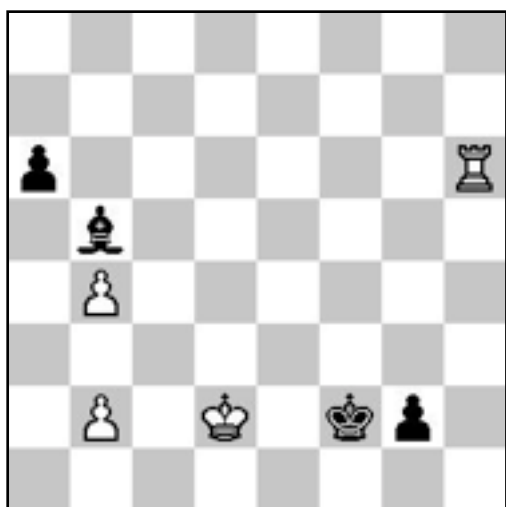
**Mid Sussex League Division 1, February 15
Gavin Lock, Horsham 1 v Luke Rutherford,
Brighton 1**

1.d4 Nf6 2.Nf3 e6 3.Bg5 c5 4.e3 cxd4 5.exd4
Be7 6.Nbd2 b6 7.c3 Bb7 8.Bxf6 Bxf6 9.Bd3 Qc7
10.Qe2 d6 11.h4 (intending to castle queenside
and push g2-g4-g5.) 11...Bxf3 12.Nxf3 d5
(solidifying the centre.)

13.0-0-0 Qf4+ (13...Nd7 14.g4 0-0-0 is more
solid.) 14.Kb1 Qg4?! 15.Bb5+ Ke7 16.Qe3 a6
(In view of what happens, the developing
16...Rd8 is preferable, when after 17.g3 a6
18.Be2 Qf5+ 19.Bd3 Qg4 Black has not wasted
time.) 17.Be2 Qf5+ 18.Bd3 Qg4 19.Nh2!?
(sacrificing a pawn to sideline the queen on h4
and attack in the centre.) 19...Qxh4 20.g4!
(threatening Nf3, winning the queen.) 20...g5
(practically forced, since after 20...Qh6?!, the
queen is still sidelined on h6 and the attack on
e6/d5 is much stronger.) 21.c4 Nc6 (aiming for

rapid development and counter pressure on d4.
21...dxc4 is met by 22.Be4! Ra7 23.Bf5! Qh6 [if
23...Nd7 24.Nf3 wins.] 24.d5f) 22.cxd5! (clearly
strongest - the centre now opens with alarming
speed.) 22...Nxd4 (22...Bxd4 23.Qe4 Qxf2 is met
by the simple 24.Be2!±) 23.Be4 (23.d6+! is also
very strong - if 23...Kf8 24.Be4 Rc8 and now
25.Nf3! Qxg4 26.Nxd4+- wins a piece.) 23...Nb5
24.dxe6 (24.d6+! is strongest in this maze of
tactical possibilities - if 24...Nxd6 [24...Kd7
25.Qxb6+- is crushing] 25.Bxa8 Rxa8 26.Rxd6
Kxd6 27.Qxb6++) 24...Rad8 25.Bf5 Qxh2!?
(Black's big idea linked to 23...Nb5, which falls
short.) 26.Rxh2 Rxd1+ 27.Kc2 Rhd8 28.exf7+
Kf8 29.Qe8+! (winning the exchange and
effectively ending the game. The next few moves
are forced.) 29...Rxe8 30.fxe8Q+ Kxe8 31.Kxd1
Bxb2 32.Rxh7 Kf8 33.Kc2 Bd4 34.f3 Bf6
35.Rb7 Bd4 36.Kd3 Bc5 37.a4 Nd6 38.Rc7 Nf7
39.a5 Ne5+ 40.Ke4 Bg1 41.Rc8+ 1-0

Gavin Lock

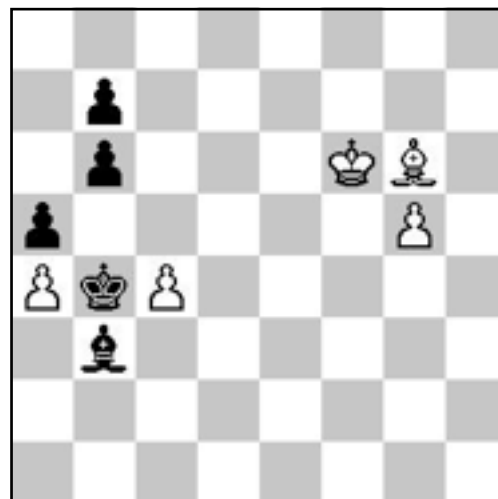


**Higgs v Cresswell, 4NCL: Division 3 Round 2, Guildford A &
DC 3 and Horsham C.C, November 7. An interesting ending**

A case of knowing your classic endgames! This position is
from Short-Kasparov, Beograd 1989. Black won with:
89...g1Q! 90.Rf6+ Kg2 91.Rg6+ Kf1 92.Rxg1+ [if 92.Rf6+
Qf2+! leads to the same conclusion] 92...Kxg1 93.Ke1 Kg2
94.Kd1 Kf3 95.Kd2 Ke4 96.Kc3 Ke3 97.Kc2 Ke2 98.Kc1
Bd3! 99.b3 Ke1 100.Kb2 Kd2 101.Ka1 Kc2 102.Ka2 Kc1
103.Ka1 Bb1! 0-1 as the wrong rook's pawn will become a
queenable knight's pawn.

I had seen this some months back, and was therefore familiar
with the winning method. Fast forward to this season and the
4NCL...

This is Higgs-Cresswell, 4NCL 2010, and at this point I
spotted Kasparov's motif. Sadly there are also more prosaic
ways to win but I enjoyed giving the spectators something to
ponder... 52.Be8! Bxc4 53.g6 Bd3 54.g7 Bh7 55.Kf7 Kc5
56.g8Q! [Cue dubious muttering from the spectators...]
56...Bxg8+ 57.Kxg8 Kd6 58.Kf7 Kc7 59.Bb5 Kc8 60.Ke7
Kc7 61.Ke6 Kd8 62.Kd6 Kc8 63.Be8! Kb8 [if 63...Kd8
64.Bd7!] 64.Bd7 Ka7 65.Kc7 Ka6 66.Bc8 b5 67.Bxb7+
1-0 ...and White doesn't even need to queen, it's mate in 2!



Correspondence Chess: Paul Selby v Cowling, Terry I (1823) C&DCCC Ward-Higgs, 2010

Bd.N10 Sussex vs Hants 1.d4 Nf6 2.c4 e6 3.g3 d5 4.Bg2 dxc4 5.Nf3 Be7 6.0-0 0-0 7.Qc2 a6 8.Qxc4 b5 9.Qc2 Bb7 10.Bf4 Nd5 11.Nc3 Nxf4 12.gxf4 Nd7 13.Rfd1 Nf6 14.Ne5 Bxg2 15.Kxg2

Nd5 16.Nxd5 exd5 17.Rac1 Bd6 18.Qb3 Qf6 19.Qxd5 Qxf4 20.e3 Qh4 21.f4 Qe7 22.Re1 Kh8 23.e4 f6 24.Nc6 Qe8 25.e5 fxe5 26.dxe5 Be7 27.Qe6 Bd8 28.Qxe8 Rxe8 29.Red1 Bh4 30.Rd7 Rac8 31.Kf3 g6 32.Ke4 Bf2 33.Ne7 Rcd8 34.Rcxc7 Rxd7 35.Rxd7 Bh4 36.Nc6 and Black lost on time. 1-0

Feliks J. Kwiatkowski v Brian J. Denman. Sicilian Defence, Alapin variation. Sussex County Championship; played at Brighton Chess Club, August 14, 2010

This was the fourth and last game of the 2009–10 County Championship final, played too late to make last year's magazine. I had to win in order to get a share of the title, as Brian had won the third game.

1.e4 c5 2.Nf3 e6 3.c3 Nf6 4.e5 Nd5 5.d4 cxd4 6.cxd4 d6 7.Bc4 Nc6 8.0-0 Be7 9.Re1 0-0 10.a3 Bd7 11.exd6 Bxd6 12.Nc3 Nf6 13.Bg5 Be7 14.Qd3 Qb6 [14. ... Qb6 is a provocation, and either 14...Re8 or 14...Rc8 would have been preferable, with an insignificant White advantage.] 15.Be3? [15.d5! exd5 16.Nxd5 Nxd5 17.Bxd5 Bc5 18.Bh4 leads to a serious White advantage. I saw the line during the game, but completely mis-assessed the position.] 15...Qc7 16.Ba2? [16.d5 would still have been powerful, albeit not as strong as after ... Qb6.] 16...Rfd8 17.Rad1 Rac8 [Black has completed his development. He has a little less space, but no real weaknesses. White must find activity, otherwise the isolated QP will be a long-term liability.] 18.Bb1 g6 19.Bg5 Be8 20.h3 [You can call this move 'planless' or 'waiting', as you please. My antique software prefers moves like Ba2, with a moderate White plus.] 20...a6 21.Ba2 b5?! 22.Ne4 ...; [The software now prefers 22. Qe2... ; with pressure. Black's best after the game move was: ...

Nxe4; 23.Qxe4 Kg7; 24.b4 ... ; with a modest White plus.] 22...Nd5?! 23.Bxe7? [23.Bxd5 Rxd5 24.Bxe7 Qxe7 25.Nc3 Rd6 and now 26.d5 b4; 27.ab Nxb4; 28.Qe4 ... ; with a serious White initiative.] 23...Qxe7? [This returns the favour, for White could now have simply played 24.Bxd5 ... and re-entered the previous variation. A knight recapture was needed.] 24.Qd2 Kg7 25.b4 [The software still prefers White's game, despite my refusal to play the principled Bxd5 at any point. A problem was that I had run into time trouble, and was playing on my imperfect instincts, rather than on reasoned judgment.] 25...a5 26.bxa5 Qxa3 27.Ra1? [A definite mistake. Again, Bxd5 first was the move, still with a White plus. My antique software now gives Black a plus after 27. ... Qxa5; 28.Qg5 h6; 29.Qh4 ...;] 27...Qb4? 28.Bxd5 exd5? [Awful! White would now have had a serious plus after 29.Reb1. Black was not even in time trouble! After other recaptures, White has only a modest advantage. However, I did not understand that I still had any sort of advantage.] 29.Nc3? Nxa5 30.Nxb5 Qxd2 31.Nxd2 Nc4 32.Nxc4 dxc4 33.Rxe8 Rxe8 34.Nd6 Red8 35.Nxc8 Rxc8 [The rook ending is probably lost in any event, and is certainly indefensible in practical play.] 36.Rc1 Kf6 37.Kf1 Ke6 38.Ke2 Kd5 39.Rd1 Re8+ 40.Kd2 Kxd4 41.Kc2+ Kc5 42.Rd2 Kb4 43.Kd1 Re7 44.Rb2+ Kc3 45.Rc2+ Kb3 46.Rd2 Ra7 47.Rd8 Ra1+ 48.Kd2 c3+ 49.Ke2 c2 50.Rb8+ Kc3 51.Rc8+ Kb2 52.Rb8+ Kc1 53.Rb7 Ra2 54.Rxf7 Kb1 [White resigned.] 0-1

**Jonathan Rogers v Feliks J. Kwiatkowski
Sveshnikov Sicilian. County Match, Essex
1 v Sussex 1; Board 2/16; Wanstead,
November 20, 2010**

1.e4 c5 2.Nf3 Nc6 3.d4 cxd4 4.Nxd4 Nf6 5.Nc3 e5 6.Nf5 d5 7.exd5 Bxf5 8.dxc6 bxc6 9.Qf3 Qd7 10.Bc4 e4 11.Qg3 Bg6 12.0-0 Bd6 13.Qh4 0-0 14.Bf4 Be7 15.Rad1 Qb7 16.Bb3 [White, a FIDE Master, has avoided the main lines of the Sveshnikov, but has achieved nothing out of the opening. He has no visible plan, and concedes the two bishops for no obvious reason.] 16...Rad8 17.Bg5 h6 18.Bxf6 Bxf6 19.Qg4 Kh7 20.Nxe4 Bxb2 21.Rb1 Bd4 22.c3 Bb6 23.Rbd1 [White offered a draw here.] 23...Rxd1 24.Rxd1 Qe7 25.Ng3 Rd8 [25.Qf6 was stronger, but Black still keeps pressure.] 26.Qe2 Rxd1+ 27.Bxd1 Qa3?! [27. ... Qg5! is more to the point.] 28.Qd2 Ba5 29.Ne2 [Around here I realised that I had let things slide, and that any advantage left was small. Despite that, I retained a strong conviction that I was likely to win.] 29...Qc5 30.Bc2 Bxc2 31.Qxc2+ g6 32.Qd3 Bb6 33.Qf3 Kg7 34.h4? [This cannot be right. I saw 34. ... Qc4; to which my ancient software gives hearty approval, but we were close to the first time control and I was wary of traps. I just wanted to fix the structure,

and grind down the man in the second session. Black's pawn structure is no better than White's - the difference is that the Black pieces are more active, and White has a small weakness on f2, due to the influence of the bishop.] 34...h5 35.Nd4 Qe5 [The time control! We now entered a 30-minutes each quickplay session, with roughly level time. White now had a huge ponder, leaving himself with only 19 minutes after move 36. This confirmed to me that I must have a serious plus.] 36.Ne2 Qe6 37.a3 Qd6 38.g3 a5 39.c4 Qc5 40.Qf4 a4 41.Kg2 Bd8 [Perhaps either ... f6 or ...f5 was preferable. I judged that, as a practical decision, White would not want to defend the endgame after 42. Qd4+, whatever its theoretical defensive potential.] 42.Nc3 Qxa3 43.Ne4 Qe7 44.c5 a3 45.Nd6 a2 46.Qd4+ Kh7 47.Qa4 Qe6 48.Ne4 a1 Q 49.Qxa1 Qxe4+ 50.Kh2 Qd5 [By this stage, White was only playing on because we had each nearly exhausted the QP time allowance. In such a situation, any result is possible.] 51.Qa8 Be7 52.Qe8 Bxc5 53.f4 Qe6 54.Qd8 Be7 55.Qd3 Qd5 56.Qc3 c5 57.Qa3 Bf6 58.Kg1 c4 59.Kf2 c3 60.Ke2 Qd2+ 61.Kf3 c2 62.Qa2 c1 Q 63.Qxf7+ Bg7 64.f5 Qf1+ [Missing the immediate mate.] 65.Ke4 Qd4# 0-1

Feliks Kwiatkowski

**Feliks J. Kwiatkowski v Russell Granat
Sussex 1 v Surrey 1, Hassocks, January 8,
2011. Ruy Lopez.**

This was played on Board 1 of the match, in the absence of anybody competent to fill top board. It excited a fair amount of curiosity as to how I let my advantage slide, and as to how I survived the lost endgame.

1.e4 e5 2.Nf3 Nc6 3.Bb5 a6 4.Ba4 d6 [This is the Deferred Steinitz Defence to the Ruy Lopez. I knew the approved answer is 5.c3, but my general preference was for the text, especially as I had beaten the same player with it some years previously.] 5.Bxc6+ bxc6 6.d4 exd4 7.Nxd4 [Now ... c5; is meant to be adequate, but I don't believe it.] 7...Bd7 8.Nc3 Nf6 9.0-0 Be7 10.Re1 0-0 [White's plan is to play e5 in good circumstances.] 11.h3 Re8 12.Bf4 Rb8 13.Rb1

[13.b3 leads to problems after 13. ... d5; 14.e5 Bb4. This is a well-known tactic in the variation.] 13...h6 14.Qd3 c5 15.Nf3 Qc8 [I remember feeling very confident at this point, yet my ancient software gives Black practical equality.] 16.e5 Bf5 17.Qd2 Nh5 18.Bh2 [I did not have the imagination to see that Black's next was remotely plausible. The software prefers 18.ed cd; 19.Bxd6 Bxd6; 20.Rxe8+ Qxe8; 21. Qxd6 Bxc2; 22.Rc1 ... ; with a clear plus.] 18...Bxh3?! 19.gxh3 Qxh3 [This was just desperation. However it was a good practical decision, in light of the success of the White e5 plan.] 20.Re3 Rb4 21.Kh1 Nf4 22.Rg1 Bh4 23.exd6 Rxe3 24.Qxe3 cxd6 25.Nxh4 Qxh4 26.Qe8+ Kh7 27.Qxf7 Nh5 28.Qg6+ [the software prefers the immediate Nd5.] 28...Kh8 29.Re1 Nf6 [Now a simple move like 30 Qf5 is quite sufficient.] 30.Nd5?? [A time-trouble howler, which is promptly followed by another one. The great

idea was 30. ... Rg4; 31.Nxf6 Rxc6; 32.Re8 mate. I had simply overlooked Black's obvious reply and panicked utterly when he made it.] 30...Qxf2 31.Rg1?? {Awful! There is a draw after 31.Re8+ Nxe8; 32.Qxe8+ Kh7; 33.Nxb4 with a Black perpetual check.] 31...Qf3+ 32.Qg2 Qxd5 33.Qxd5 Nxd5 34.Bxd6 Rxb2 35.Be5 Rb7 36.Rg6 Kh7 [Nf6! was better, for if 37.Bxf6 Kh7. Of course Black is winning anyway, but in quickplay sessions - from move 36 onwards - anything is possible.] 37.Rxa6 Re7 38.Bg3 Re2 39.c4 Ne3 40.Bd6 Nxc4 41.Bxc5 h5 42.Ra7 Re5 43.Bd4 Rg5 [Black has not made the best of his opportunities. Just one example - 37. ... Ne3; was very strong. Now my ancient software only gives Black a small advantage.] 44.a4 h4 45.a5 [The software prefers continuing the harassment with

Rd7 and saving the a-pawn as a threat.] 45...Rxa5 46.Rxc6+ Kh6 47.Rc7 Ra4 48.Rc5 Kg6 49.Kg2 Nd6 50.Bf2 Nf5 51.Kh3 Rf4 [Here is where it pays to be sure of your basic endgames.] 52.Rxf5 Kxf5 53.Bxh4 Rf3+ 54.Kg2 Kg4 55.Bf2 Ra3 56.Kh1 Kf3 57.Bg1 [Agreed drawn! There is a right corner and a wrong corner for the King: fortunately I knew the right corner. This has to be of the opposite colour square to the bishop, so that a stalemate can be achieved - e.g. Black with rook on a1 and king on h3, White with king on h1 and bishop on g1. With a light-squared bishop, defending the same corner from f1, Black can pin it against the White king, then force the king to move away.] 1/2-1/2

Feliks Kwiatkowski

Richard McMichael v Feliks J. Kwiatkowski Middlesex 1 v Sussex 1 London, February 5, 2011

[This was played on board 2 of the match, which was held at the Exmouth Arms, by London's Euston Station.] 1.d4 Nf6 2.Bg5 e6 3.e4 h6 4.Bxf6 Qxf6 5.c3 [This is not White's most challenging idea, and Black's game becomes easy to handle.] 5...d5 6.e5 Qd8 7.f4 c5 8.Nf3 Qb6 [My software now suggests Qb3 and starts expressing concern for White's health after any alternative.] 9.Qd2 Nc6 10.Be2 Bd7 [10...g5!?, now or subsequently, is suggested as a plausible choice by my software. I can't recall that it

entered my head during the game.]] 11.0-0 Be7 12.Kh1 Rc8 13.a3 a5 14.Bd3 a4 [The software goes for the pawn-grab 14. ... cd. I did not have the brains to sort out the complications, so opted to keep up the pressure.] 15.Rf2 Na5+ 16.Qe3 Nb3 17.Ra2 cxd4 18.cxd4 [Black's best may well have been 18... Nc1; 19.Ra1 Nxd3; 20.Qxd3 Rc1+; 21.Ng1 0-0; but now I grew materialistic.] 18...Nxd4 19.Nxd4 Bc5 20.Rc2 Bxd4 21.Rxc8+ Bxc8 [Completely missing the elegant 21. ... Ke7!] 22.Qe2 Bd7 23.Nc3 0-0 24.Bc2 Bxc3 25.bxc3 Rc8 26.Qd3 g6 27.h4 Qf2 28.Ra1 Qxh4+ 29.Kg1 Qxf4 [Here White gave up.] 0-1.

Feliks Kwiatkowski

Feliks J. Kwiatkowski v Christopher Lowe Mid Sussex League 2010-2011, division 2, March 23, 2011. St Francis and Haywards Heath 1 v Brighton and Hove 3.

This was played on board 1 of the match, which was one of the first few played at the new B&H venue, the Avenue Bridge Club, Hove.

1.e4 c5 2.Nf3 d6 3.d4 cxd4 4.Nxd4 Nf6 5.Nc3 g6 6.Be3 Bg7 7.f3 Nc6 8.Qd2 Bd7 9.0-0-0 Rc8 10.g4 0-0 [Black has played an unconventional line in the Dragon. This was little consolation,

for EVERY line in the Dragon is dangerous.] 11.Kb1 Ne5 12.Be2 [I found afterwards that I had been playing in accord with good theory. Black, who at the time did not possess an official grading, felt he had nothing to lose by being dangerous. The following sacrifice has also been played by strong grandmasters. Its theoretical soundness is debatable, but it is naturally dangerous in practice.] 12...b5 13.Ndx5 Bxb5 14.Nxb5 Rb8 15.Nc3 [15.Bxa7 Rb7 16.g5 Ne8 17.f4 Nc7 18.Bd4 Nxb5 19.Bxe5 is the terrifying computer solution, with a serious White plus.] 15...Qc7 [Now here's a thing! I actually

remember sternly reminding myself at this point to watch out for my weakness on b2 and not to allow cheap sacrifices. I thought carefully for six minutes, and played the following howler.

Instead of the text, the computer suggests b3 at once, with a serious White plus.] 16.g5?? Qb7?? [Black misses his chance for glory. He should have played 16...Nxf3 17.Bxf3 Nxe4 18.Bxe4 Bxc3 with a powerful attack. These are standard Dragon ideas, and I cannot see how Black missed them. I saw the problem as soon as I had played g5 and just sat there feeling utterly sick inside, while attempting to keep a stone face.] 17.b3 Nfd7 18.Bd4 [My software prefers both h4 and Nd5 to the move I chose. I just felt the need to confront the Black bishop. White is still doing

well.] 18...Nb6 19.f4 Nec4 20.Bxc4 Nxc4 21.Qe2?! [Qd3 is more accurate. After my actual move, my software assesses Black as only a little worse after ... Rfc8. Fortunately, Black felt the need for excitement.] 21...e5?! 22.fxe5 [22.Qxc4!] 22...Rfc8 23.exd6 Na3+ 24.Kb2 Nc4+ 25.Ka1 Qb4 [Each side was now in serious time trouble, but I was convinced I had invested my time wisely, as I could not see a Black breakthrough, and the computer agrees.] 26.Bxg7 Kxg7 27.Nd5 Qa3 28.Rb1 Nxd6 29.Qf2 Nb5 30.Qf6+ Kg8 31.Ne7+ Kf8 32.Nxc8 [Here Black's time ran out, but of course he is now ruined anyway.] 1-0.

Feliks Kwiatkowski

**Feliks J. Kwiatkowski [King's Head 1] v
Simon K. Williams [Athenaeum 1]
London League 2010-2011, division 1
London, April 27, 2011**

Yes, this is THE Simon K. Williams, the grandmaster. And the standard of the London League is such that he could only get a place on board TWO of the Athenaeum 1st team.

1.e4 c5 2.Nf3 d6 3.d4 cxd4 4.Nxd4 Nf6 5.Nc3 g6 6.Be3 Bg7 7.f3 Nc6 8.Qd2 0-0 9.Bc4 Bd7 10.h4 ...

[Simon later patiently explained to me that this is a decision point, a situation I was quite unaware of. 10.h4 cuts out various Black ideas such as ... Rb8 (the so-called 'Chinese Dragon'), which would be a possibility after the usual O-O-O. On the other hand, by committing the h-pawn early, White in turn cuts out some of his own possibilities, based on an early advance of the g-pawn.] 10...h5 11.0-0-0 Rc8 12.Bb3 Ne5 13.Kb1 Re8 [I had reached this position previously, as White against C. Sreeves, in round 2 of the Hastings Masters 2010-11, just before the New Year. I played a book recommendation, 14.Bh6, and got a good game with a strategic line when Sreeves chose an ambitious reply. However, when I tried the same line against a postal opponent at about the same time, he played the most solid counter to the same idea, and I found myself in a sterile rook ending very quickly. I did not want to

repeat this. I half-remembered a line Judith Polgar had played successfully against Kaidanov in the recent past, so I just closed my eyes, pulled the trigger and hoped for the best.]

14.g4 hxg4 15.h5 Nxh5 16.Bh6

[Judith had played 16.Rdg1 first. I am blissfully ignorant as to whether my move-order makes a difference. Her masterpiece continued 16...e6 17.Bh6 Qf6 18.fxg4 Bxh6 19.Qxh6 Qg7 20.Qd2 Nf6 21.g5 Nh5 22.Nce2 Nc4 23.Bxc4 Rxc4 24.b3 Rc5 25.Ng3 Nxc3 26.Rxc3 Rec8 27.Rgh3 e5 28.Rh4 exd4 29.Qh2 Kf8 30.Qxd6+ Kg8 31.Qxd7 d3 32.c4 Qc3 33.R4h2 b5 34.e5 Qxe5 35.Rh7 R5c7 36.Qd6 1-0. Since then, White has had huge success with this set-up. The idea is to exchange the defending knight on h5, and to triple up on the h-file.]

16...e6 17.Rdg1 Qf6 18.fxg4 Bxh6 19.Qxh6 Qg7 20.Qe3?! Nf6 21.g5 Nh5 22.Nce2 Nc4 23.Bxc4 Rxc4 24.b3 Rc5 25.Ng3 Nxc3 26.Rxc3 [Now we see the difference between Qd2 and my inaccurate Qe3 - after my move the queen and rook get in each other's way. By this point I was in real time trouble, as I did not have the Polgar variation at my fingertips. Williams had plenty of time in hand to reach the time control (of 36/90) and was beginning to look confident.] 26...e5 27.Ne2 Rec8 [This position is far too daunting to assess. My antique software suggests 28.Qd2 Rxc2 29. Qxd6 =, or 28. ... Qf8

29.Rc3=, which seem suspect suggestions. I was feeling aggressive, and conceived the plan of parking my knight on f6, at whatever cost.] 28.c4 b5 29.Nc3 bxc4 30.b4 [I had to try this - 30.Nd5 runs into Rxd5! 31.ed Bf5+ with a typically nasty Dragon counterattack.] 30...Rb8 31.a3 a5 [Here my software prefers Be6 as leading to a Black plus.] 32.Qd2! [Now Black must be very careful again.] 32...axb4 33.Qxd6 Qf8 34.Qxf8+ [NOT Qxd7, when 34. ... bc3+ wins.] 34...Rxf8

35.axb4 Rb8 36.Nd5 Rxd5?! [Fortunately, this was the last move before the time control, and Black was looking worried. My software suggests ... Kg7 with a Black advantage.] 37.exd5 Rxb4+ 38.Ka2 Rb6 39.Re1 f6 [Here Black offered a draw, which I rejected.] 40.gxf6 Kf7 41.Rxe5 Kxf6 42.Re4 [At this point I realised there were no winning chances, so I offered a draw, which Black accepted.] 1/2-1/2

Feliks Kwiatkowski

Hubert Mossong [AMCA Dragons] - Feliks J. Kwiatkowski [King's Head] [B23] 4NCL 2010-11, Div. 2, Round 6, February 20, 2011

1.e4 c5 2.Nc3 Nc6 3.Bb5 Nd4 4.Nge2 [This was played on board 3 of the match. White is an experienced FM and this provocative set-up is one of his specialities. My team captain had prepared me, so I responded with some

provocations of my own. Just sit back and enjoy the ride.] 4...a6 5.Bc4 e6 6.Nxd4 cxd4 7.Ne2 Nf6 8.d3 Bc5 9.Bg5 Qa5+ 10.Bd2 Qc7 11.0-0 Bd6 12.Bb3 Bxh2+ 13.Kh1 Bd6 14.Nxd4 b6 15.Qe2 Bb7 16.f4 Bc5 17.c3 h5 18.Nf3 h4 19.Ng5 Nh5 20.Be1 Ng3+ 21.Bxg3 hxg3+ 22.Nh3 Bf2 23.Rxf2 gxf2 24.Qxf2 0-0-0 25.Kg1 f6 26.Re1 g5 27.f5 e5 28.c4 g4 [Oopsie!] 0-1

Feliks Kwiatkowski

Feliks Kwiatkowski v Luke Rutherford Sicilian English Attack Sussex Championship semi-final 2011

1 e4 c5 2 nf3 d6 3 d4 cd4 4 nd4 nf6 5 nc3 a6 6 be3 (The characteristic move of the English Attack) e6 7 f3 nc6 (b5 is also common) 8 qd2 be7 9 0-0-0 0-0 10 g4 nxd4 11 qxd4! b5 12 g5 (h4 is also common and I think it may be more critical) nd7 13 h4 bb7 14 rg1?! (this is dubious. In conjunction with the plan of h5 and g6 it is not obvious that the Rook is working harder on g1 than h1. In addition it sets up a loss of tempo

to Ne5 at some point.) qa5 kb1 15 b4 ne2 16 ne2 ne5 17 rg3 rac8 18 nc1 cq7! 19 rd2 d5 (freeing Black's pieces and tactically bothering the g3 Rook) 20 ed5 bd5 21 bf4 bd6 22 rdg2 rfd8 23 qe3 ng6 (I was pleased with this move and the following regrouping.) 24 bxd6 qxd6 25 rg4 (h5 nh4 wins the exchange) e5 26 nd3 a5 27 h5 nf4 28 rf2 be6 29 rh4 bf5 30 rd2 a4 31 rhh2 b3 32 nxe5 nd5 33 qd4 rxc2 34 rxc2 bc2 35 kc1 nb4 White overstepped the time limit in this hopeless position.

Luke Rutherford

Luke Rutherford v I.M. Richard Bates King's Indian Sussex v Middlesex 2011

1 d4 nf6 2 c4 g6 3 nc3 bg7 4 e4 d6 5 f3 0-0 6 be3 e5 7 nge2 (d5 is more common but I've long preferred this) nbd7 8 qd2 nb6?! (strange move. C6 is normal) 9 b3 ed4 10 nd4 c6 11 rc1 re8 12 be2 d5 13 ed5 cd5 14 c5 nbd7 15 b4? (ncb5 is much more accurate) ne5 16 ncb5 qe7 (b6!) 17 0-0 nc4 18 bxc4 qxe3+ 19 qxe3 rxe3 20 bb3

(after Blacks inaccurate 16th move White is back in the driving seat. With the exception of the Bishop on g7 Black has an assortment of problem pieces and an inferior structure.) bd7 21 Rfd1 (not nd6? ne8) re5 22 nd6 bh6 23 nxb7 A nice move but one that hardly counts as a sacrifice as White's compensations is so strong. be3+ 24 kf1 bxc1 25 rxc1 ne8 26 kf2 nc7 27 a4 rb8 28 c6 bc8 29 b5 re7 (capturing twice on b7 allows nc6 folloed by na5) 30 nd6 be6 31 a5 na8

32 ba4 ?! inaccurate kf8 33 Bd1 (now heading for the right square) rc7 34 be2 ke7 35 nb7 rxb7 36 cb7 rxb7 37 nxe6 Resigns fxe6 38 rc8 nc7 a6 is a thematic finish finally exploiting

Black's persistent difficulties with his piece placement.

Luke Rutherford

**Donald Macfarlane v Luke Rutherford
Mid Sussex League 2011**

1 e4 c5 2 nc3 nc6 3 g3 g6 4 bg2 bg7 5 d3 d6 6 be3 rb8 7 qd2 b5 8 f4 b4 9 nd1 e6 10 h3 nge7 11 g4 f5 12 nge2 nd4 13 ng3 qa5 14 0-0 qa4 15 b3 (maybe already the losing move. Rf2 leads to surprising problems after b3 by black. I think both of us thought that c3 bc bc nc2 was good for Black. However rc1 nxe3 nxe3 is only equal) qa3 16 rc1 qxa2 17 ef5 ef5 18 g5 qa5 19 re1 qc7 (the pawn-grabbing mission has cost 6 tempi. The time is fully justified by the damage done to white's queenside, this makes it impossible to

expel the Black pieces from the centre. It is this factor, more than the pawn itself, which confers a winning advantage. 20 bf2 bb7 21 qe3 (exchanging the f2 Bishop for the Knight on d4 prolongs the game although Blacks advantage is still vast. bxc2 22 kxc2 kf7 23 ne2 qb7+ 24 kg3 nd5 25 qd2 nf3 !! (trapping the queen) 26 kf3 ne3+ 27 kxe3 Kindly allowing mate on the board. Kg3 qg2+ kh4 h6 ng3 hg5 kg5 bf6 mate is another nice win justifying Blacks disinclination to castle. rhe8 mate.

Luke Rutherford

SCCA competitions 2011-12 entry form

ENTRIES are invited for the various competitions run by the county. There are a number of changes from recent years.

McArthur Cup for teams of six. Open to all clubs in Sussex. The county's premier competition, played as a K.O.
New: 3½ hour playing session (prior to final) should permit evening matches.

(entry fee £8 per team, or £10 for unaffiliated clubs).

The Paul Watson Trophy for teams of 4, played as a K.O. Open to all clubs in Sussex. 3½ hour playing session should permit evening matches.

New: maximum average grade of <=150.

(entry fee £4 per team, or £6 for unaffiliated clubs).

County Championship. A K.O. competition with 'traditional' time controls permitting the leisure of adjournments rather than quick-play finishes. Open to players who live in Sussex or who are members of Sussex clubs

(entry fee £3.50)

West Sussex Queen. Open to players graded under 160 who live in West Sussex or who are members of clubs in West Sussex.
New: now a K.O. competition (with Plate competition if numbers warrant it), and playing session of maximum 4½ hours with quick-play finishes

(entry fee £3.50).

East Sussex Queen. Open to players graded under 160 who live in East Sussex or who are members of clubs in East Sussex
New: now a K.O. competition (with Plate competition if numbers warrant it), and

playing session of maximum 4½ hours with quick-play finishes.

(entry fee £3.50).

Veterans Championship. Open to players aged 60 or over on or after October 1, 2011, who live in Sussex or who are members of Sussex clubs

New: now a K.O. competition (with Plate competition if numbers warrant it), and playing session of maximum 4½ hours with quick-play finishes.

(entry fee £3.50).

All entries should be sent to the tournament controller, Paul Buswell, 51 Kenilworth Road, St. Leonards-on-Sea TN38 0JL by FRIDAY, SEPTEMBER 30. Or e-mail

PaulBuswellChess@aol.com

Cheques payable to Sussex County Chess Association; or SCCA bank account details can be made available on request for direct payments.

Please tick the appropriate boxes above and complete details below

Name of club or of individual competitor
.....
.....

Address of club captain or of individual competitor
.....
.....
.....
.....

Phone number(s) and e-mail:
.....
.....

SCCA Patrons 2011-12

PLEASE help the work of the association by renewing your subscription for 2011-2012. If you have not been a Patron, please consider taking out a subscription.

Patrons are exempt from board fees in county matches and will receive a complimentary copy of Sussex Chess.

County fees: Adults £18 and Juniors (U-18) £9

Please complete the form below and return to the Treasurer:

Peter Kemp
48 Burleigh Way
Crawley Down
West Sussex
RH10 4UQ

Thank you in anticipation of your support for Sussex Chess.

Peter Kemp
SCCA Treasurer

To SCCA Treasurer P.D.Kemp

From Name (Block capitals.....)

Address.....

.....

.....

I enclose my Patron's fee for 2011-12 of £.....

Signature.....

Email address (for confirmation of receipt)

.....

Cheques should be payable to "Sussex County Chess Association". Receipts will be issued by email or by post on receipt of a SAE

WHO'S WHO

President	Robert Elliston	Cherry Tree Cottage, 2 Marlpit Gardens, Ticehurst, East Sussex, TN5 7BB. Tel: 01580 200609
Deputy President	Robert Williams	7 The Mount, 45 Meads Road, Eastbourne, East Sussex, BN20 7PX . Tel : 01323 639766
Secretary	Dix Roberts	6 Foxleigh Close, Horsham, West Sussex, RH12 4AX 01403 260033 dix@foxleigh.globalnet.co.uk
Treasurer	Peter Kemp	48 Burleigh Way, Crawley Down, West Sussex, RH10 4UQ Tel: 01342 717050
Auditor	Debbie Musgrove	
Open Team Captain	Richard Almond	5 The Willows, Sedlescombe Road North, St Leonards-on-Sea, East Sussex, TN37 7PA Tel: Home: 01424 753612; Work: 01424 453230; Mobile: 07905 479445 email : richardalmond141@hotmail.com
Open Team Captain (on the day)	Paul Selby	Garden Flat, 2A Cleveland Road, Brighton, East Sussex BN1 6FF Tel: 01273553825
U-180 Team Captain	Paul Batchelor	98 Mackie Avenue, Brighton 01273 508128 batchelorpaul6@gmail.com
U-160 Team Captain	John Cannon	149 Compton Lane, Horsham, West Sussex, RH13 6BH 01403 253776 cannon149@tiscali.co.uk
U-140 Team Captain	Keith Osborne	01323 492158 KeithCOsborne@aol.com
Correspondence Team Captain	John Dodgson	51 Denham Way, Camber, Rye, East Sussex, TN31 7XR. Tel: 01797 226036 email: j.dodgson51@btinternet.com
Tournament Controller	Paul Buswell	PaulBuswellChess@aol.com
Sussex Junior Chess Liaison Officer	Dr John Higgs	info@sussexjuniorchess.org
Adjudications Secretary	Robert Elliston	Cherry Tree Cottage, 2 Marlpit Gardens, Ticehurst, East Sussex, TN5 7BB. Tel: 01580 200609
Webmaster	Robert Elliston	robertvelliston@aol.com
County Archivist	Brian Denman	b.denman@btopenworld.com
ECF Delegate	Julie Denning	Glenholm, Brighton Road, Woodmancote, Henfield, West Sussex, BN5 9ST. Tel: 01273 492408 email: julie.denning1@btinternet.com
SCCU Delegate	Julie Denning	Glenholm, Brighton Road, Woodmancote, Henfield, West Sussex, BN5 9ST. Tel: 01273 492408 email: julie.denning1@btinternet.com
Sussex Chess News Editor	Mick Plumb	7 Hide Close, Littlehampton, West Sussex 01903 718058 07816488513 mickplumb@googlemail.com